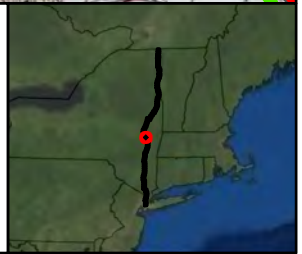
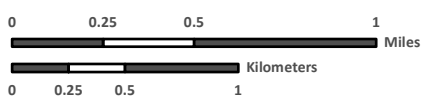
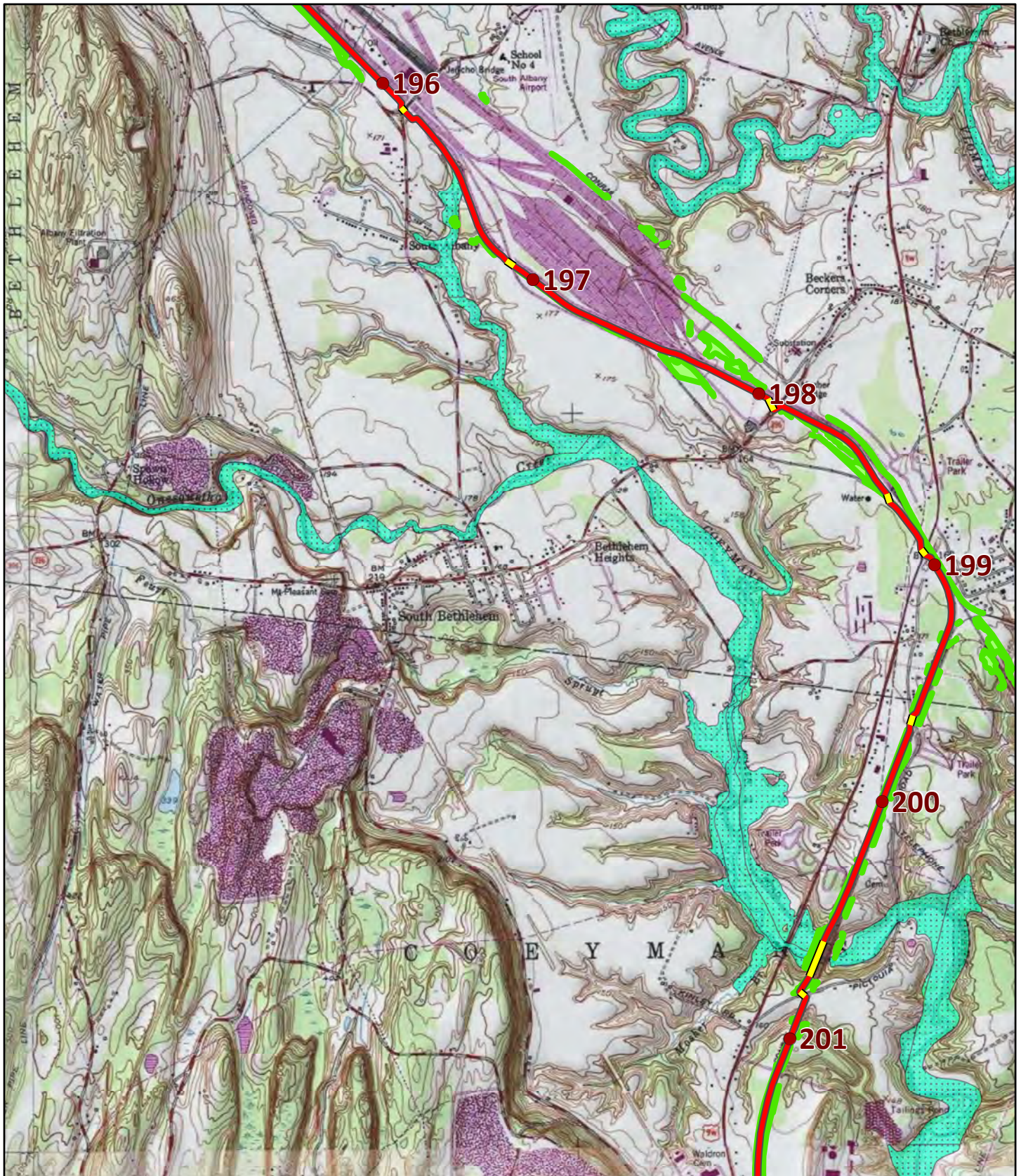


- Proposed CHPE Project Route Mileposts
- Proposed CHPE Project Route
- HDD Installation
- Pipe Bridge Installation
- Federal Navigation Channel
- FEMA 100-Year Flood Zone
- Delineated Wetlands

Projection: Transverse Mercator
 State Plane New York East FIPS 3101 Feet
 North American Datum of 1983



Source: Imagery -(c) 2010 Microsoft Corporation and its data suppliers.



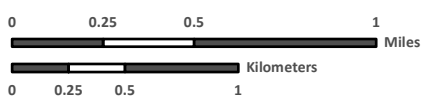
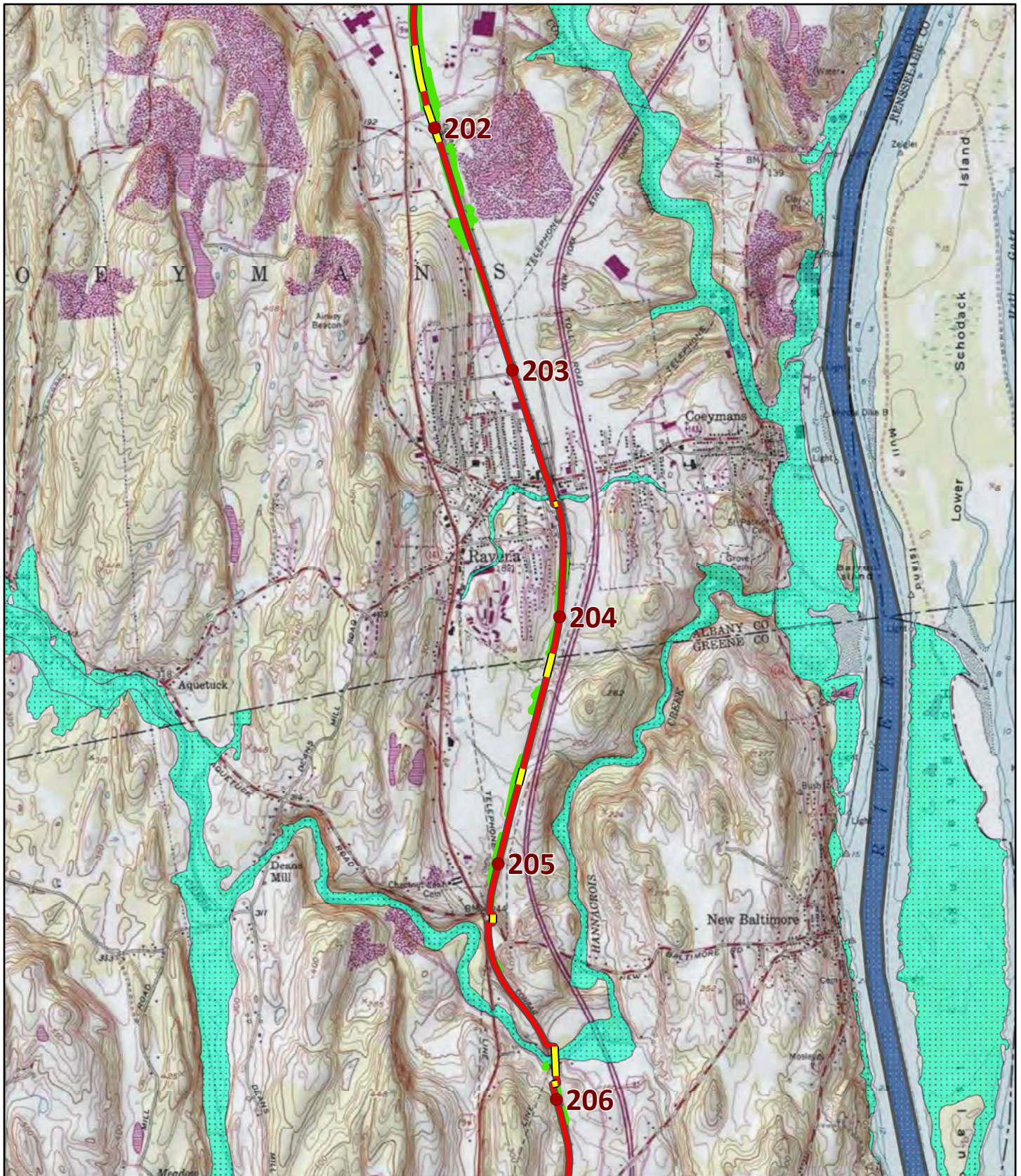
- Proposed CHPE Project Route Mileposts
- Proposed CHPE Project Route
- HDD Installation
- Pipe Bridge Installation
- Federal Navigation Channel
- FEMA 100-Year Flood Zone

Delineated Wetlands

Projection: Transverse Mercator
 State Plane New York East FIPS 3101 Feet
 North American Datum of 1983



Source: Imagery -(c) 2010 Microsoft Corporation and its data suppliers.

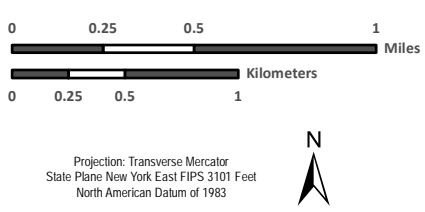
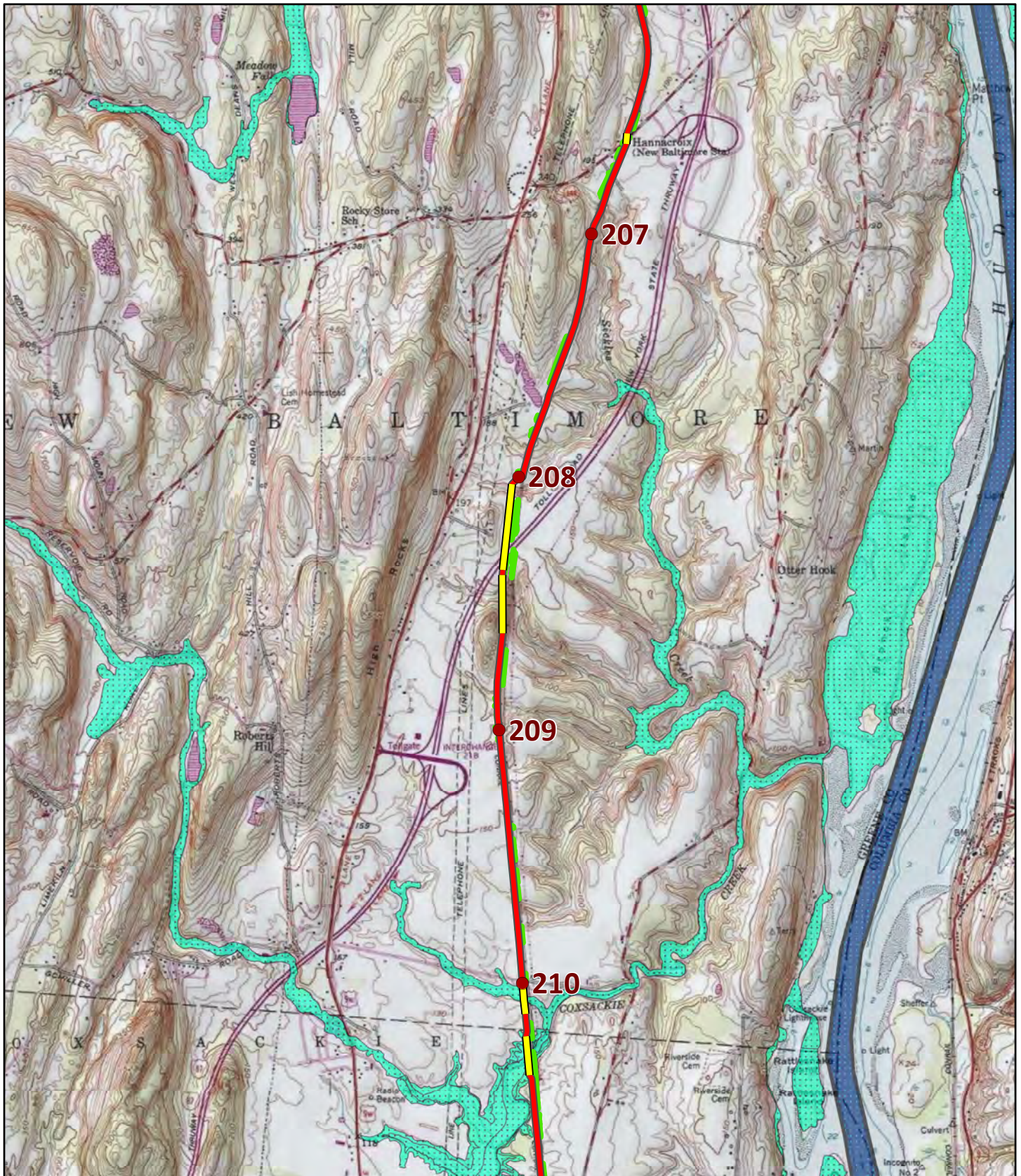


- Proposed CHPE Project Route Mileposts
- Proposed CHPE Project Route
- HDD Installation
- Pipe Bridge Installation
- Federal Navigation Channel
- Delineated Wetlands
- FEMA 100-Year Flood Zone

Projection: Transverse Mercator
 State Plane New York East FIPS 3101 Feet
 North American Datum of 1983



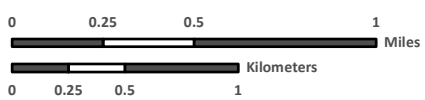
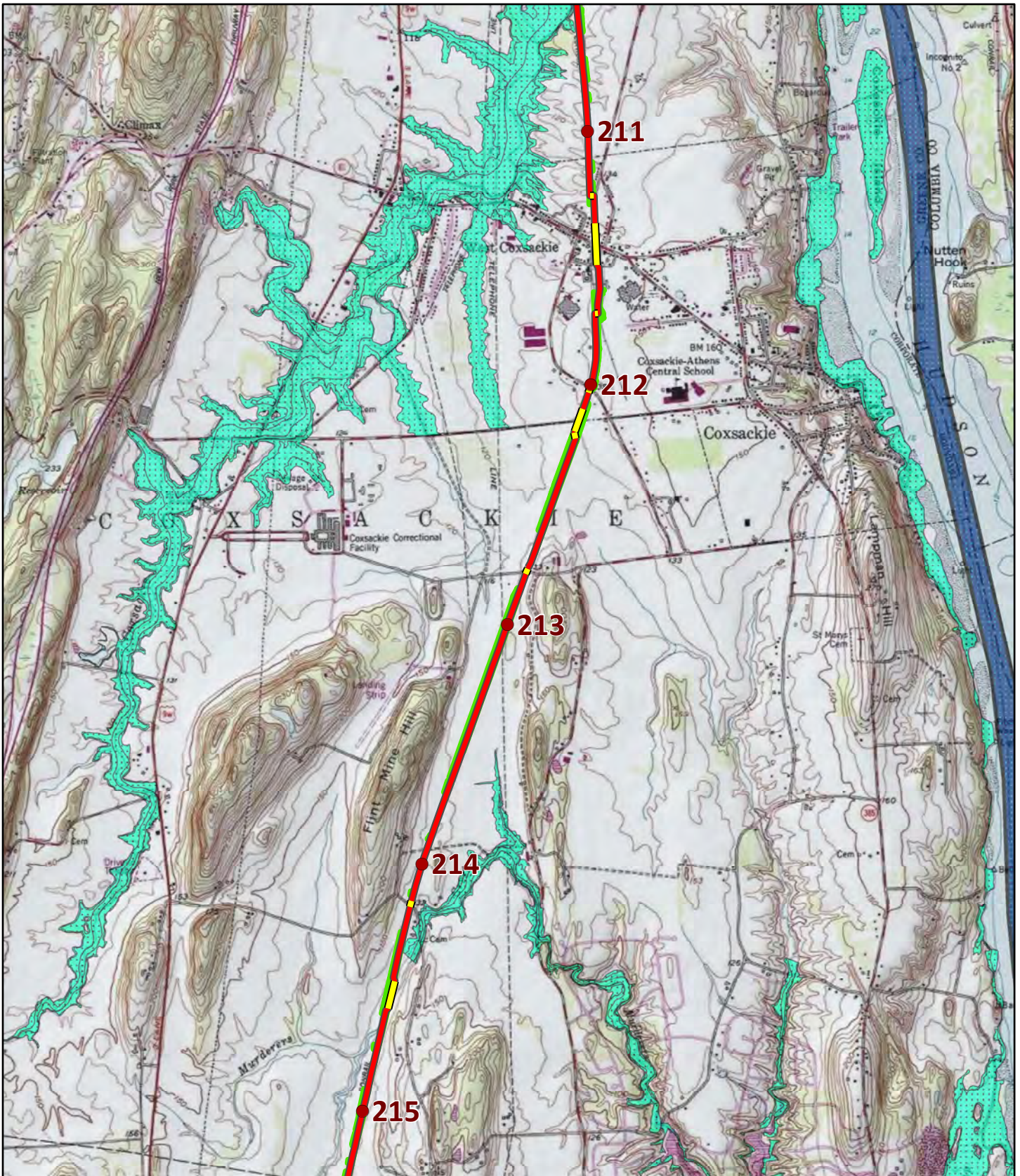
Source: Imagery - (c) 2010 Microsoft Corporation and its data suppliers.



- Proposed CHPE Project Route Mileposts
- Proposed CHPE Project Route
- HDD Installation
- Pipe Bridge Installation
- Federal Navigation Channel
- FEMA 100-Year Flood Zone
- Delineated Wetlands

Projection: Transverse Mercator
 State Plane New York East FIPS 3101 Feet
 North American Datum of 1983

Source: Imagery - (c) 2010 Microsoft Corporation and its data suppliers.

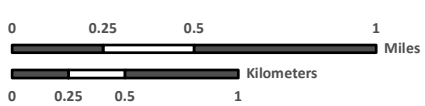
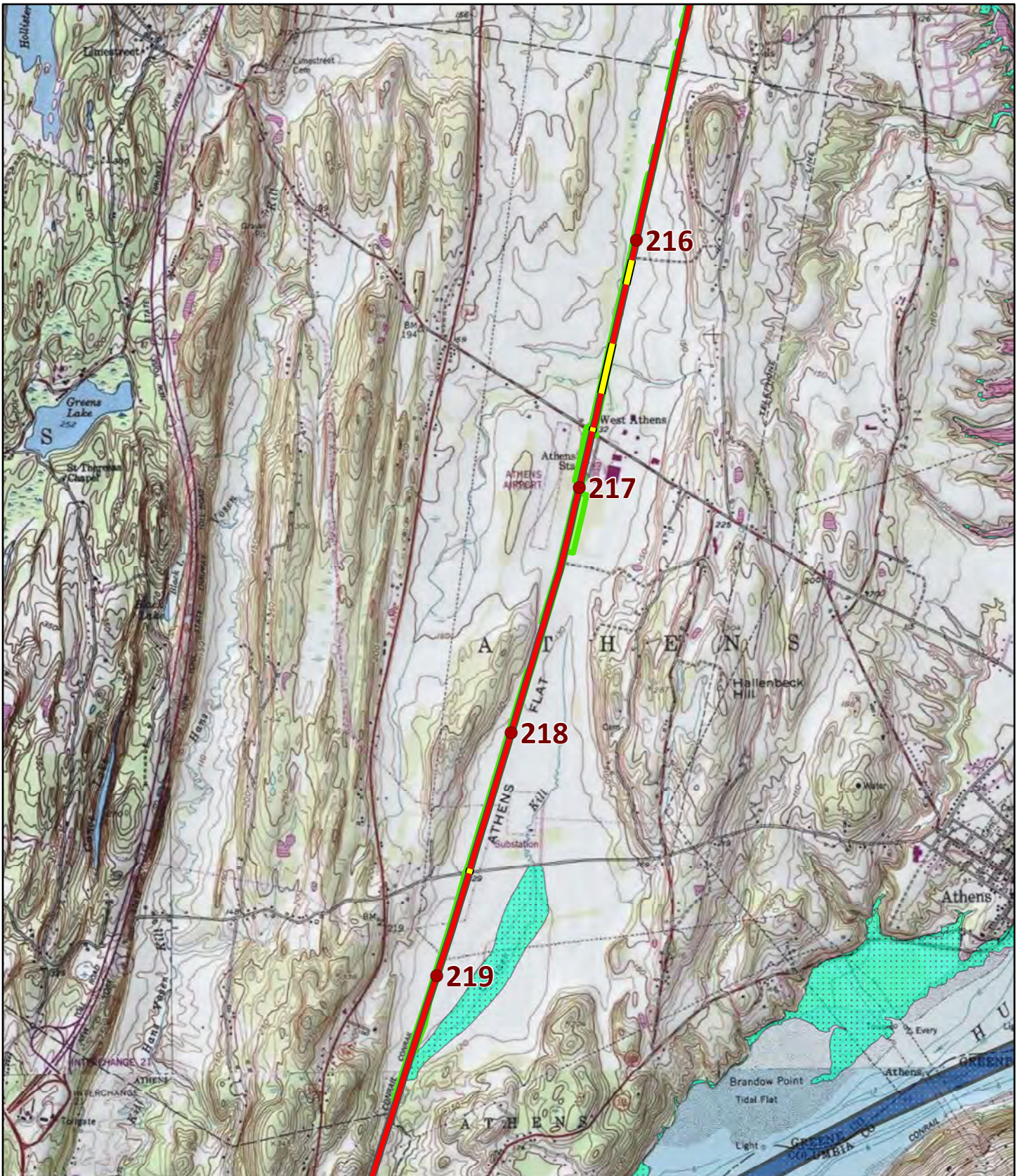


Projection: Transverse Mercator
 State Plane New York East FIPS 3101 Feet
 North American Datum of 1983

- Proposed CHPE Project Route Mileposts
- Proposed CHPE Project Route
- HDD Installation
- Pipe Bridge Installation
- Federal Navigation Channel
- Delineated Wetlands
- FEMA 100-Year Flood Zone



Source: Imagery -(c) 2010 Microsoft Corporation and its data suppliers.

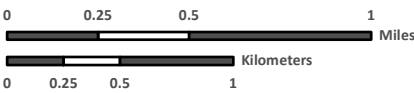
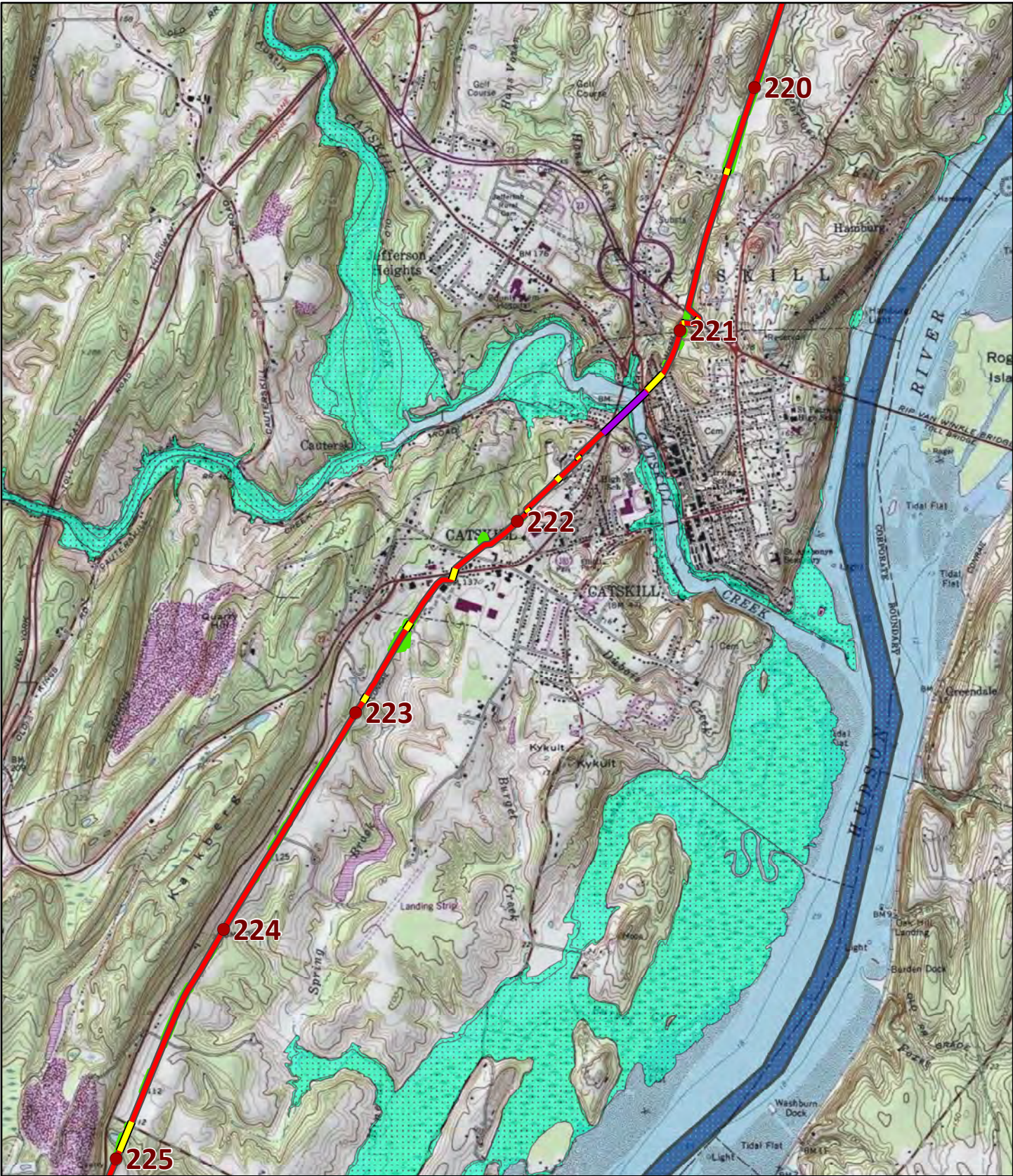


- Proposed CHPE Project Route Mileposts
- Proposed CHPE Project Route
- HDD Installation
- Pipe Bridge Installation
- Federal Navigation Channel
- FEMA 100-Year Flood Zone
- Delineated Wetlands

Projection: Transverse Mercator
 State Plane New York East FIPS 3101 Feet
 North American Datum of 1983

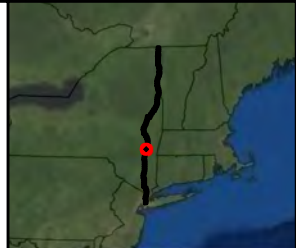


Source: Imagery - (c) 2010 Microsoft Corporation and its data suppliers.

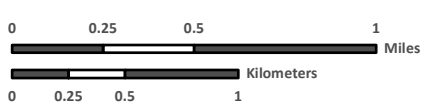
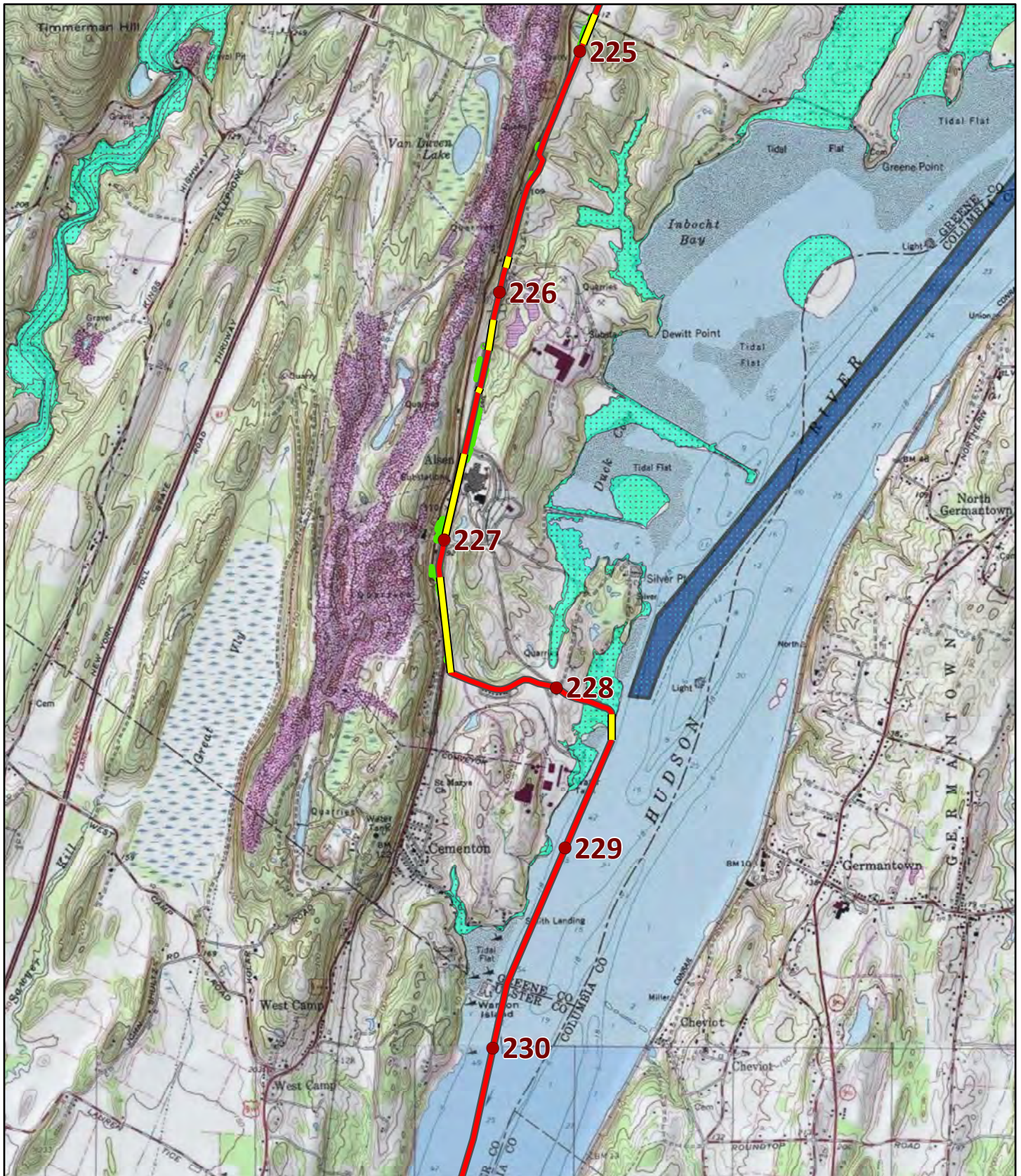


Projection: Transverse Mercator
 State Plane New York East FIPS 3101 Feet
 North American Datum of 1983

- Proposed CHPE Project Route Mileposts
- Proposed CHPE Project Route
- HDD Installation
- Pipe Bridge Installation
- Federal Navigation Channel
- ▨ FEMA 100-Year Flood Zone
- ▨ Delineated Wetlands



Source: Imagery - (c) 2010 Microsoft Corporation and its data suppliers.

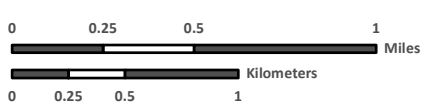
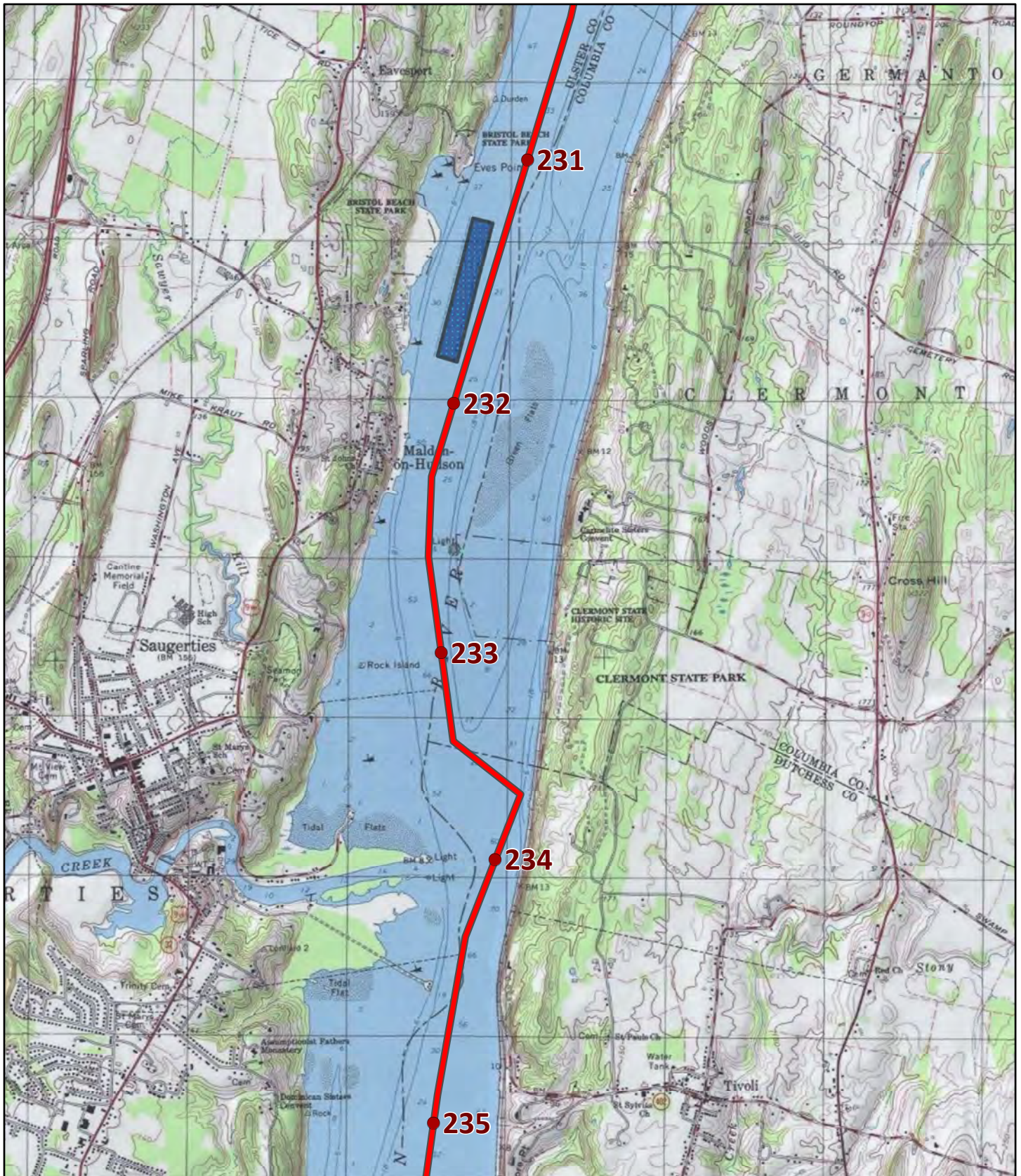


- Proposed CHPE Project Route Mileposts
- Proposed CHPE Project Route
- HDD Installation
- Pipe Bridge Installation
- Federal Navigation Channel
- FEMA 100-Year Flood Zone
- Delineated Wetlands

Projection: Transverse Mercator
 State Plane New York East FIPS 3101 Feet
 North American Datum of 1983

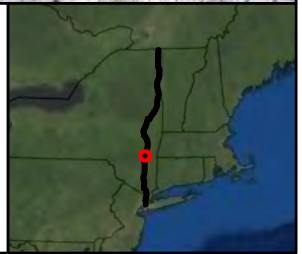


Source: Imagery - (c) 2010 Microsoft Corporation and its data suppliers.

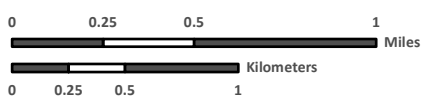
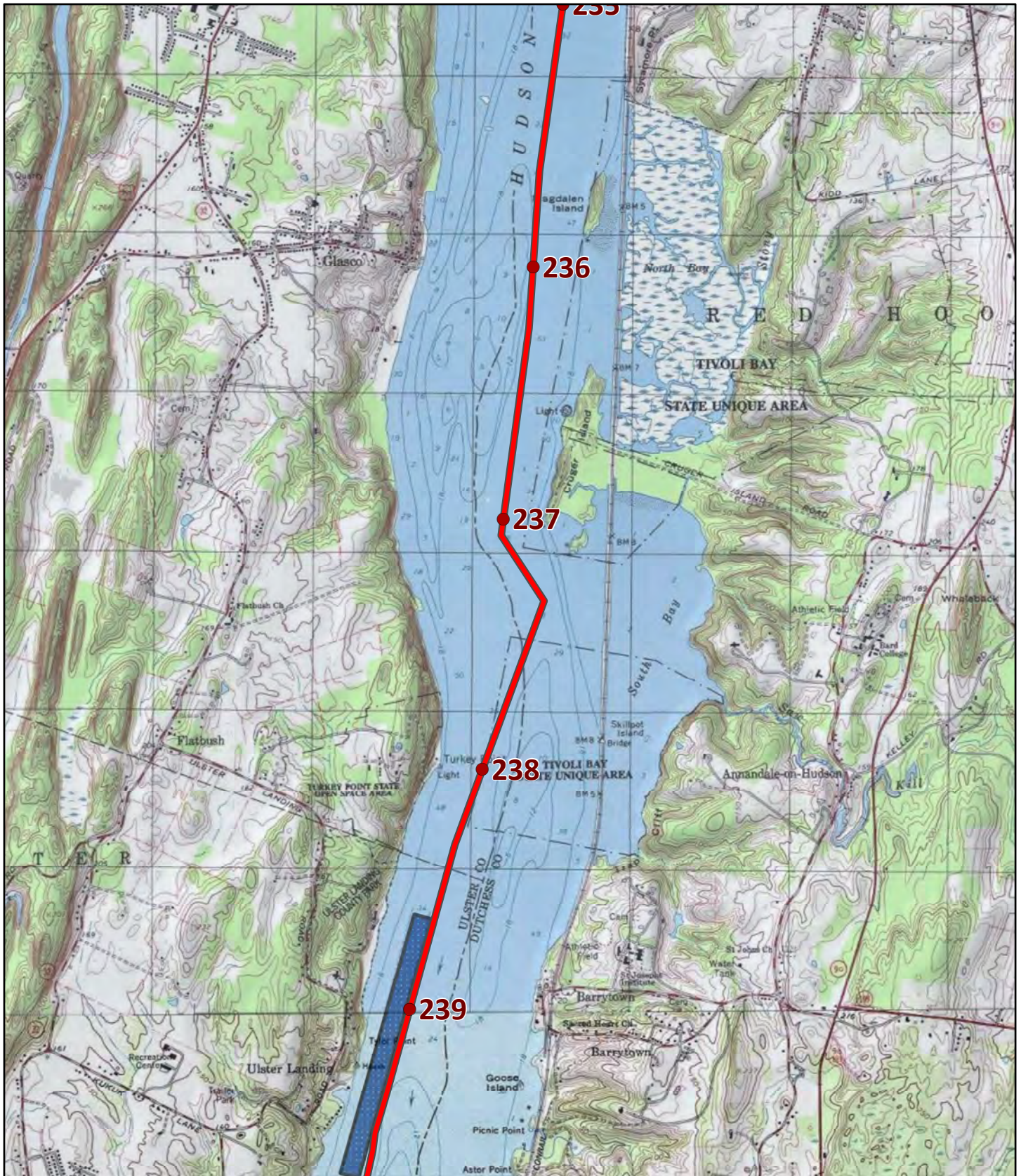


- Proposed CHPE Project Route Mileposts
- Proposed CHPE Project Route
- HDD Installation
- Pipe Bridge Installation
- Federal Navigation Channel
- FEMA 100-Year Flood Zone
- Delineated Wetlands

Projection: Transverse Mercator
 State Plane New York East FIPS 3101 Feet
 North American Datum of 1983



Source: Imagery - (c) 2010 Microsoft Corporation and its data suppliers.

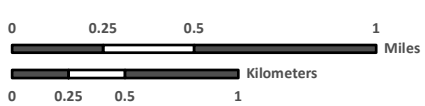
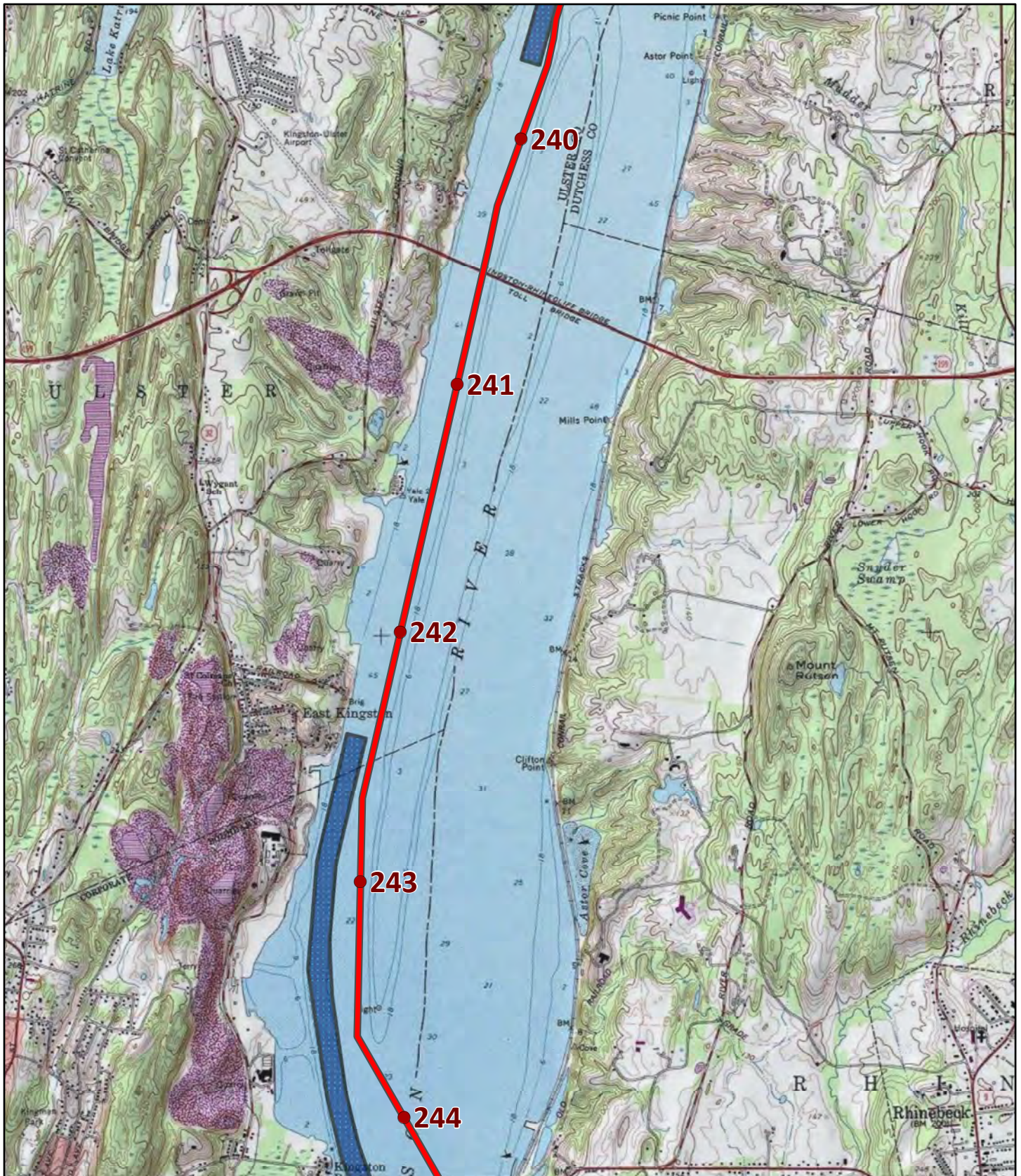


- Proposed CHPE Project Route Mileposts
- Proposed CHPE Project Route
- HDD Installation
- Pipe Bridge Installation
- Federal Navigation Channel
- FEMA 100-Year Flood Zone
- Delineated Wetlands

Projection: Transverse Mercator
 State Plane New York East FIPS 3101 Feet
 North American Datum of 1983

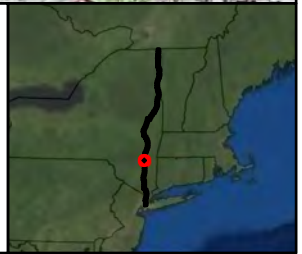


Source: Imagery - (c) 2010 Microsoft Corporation and its data suppliers.

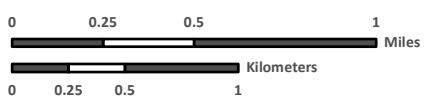
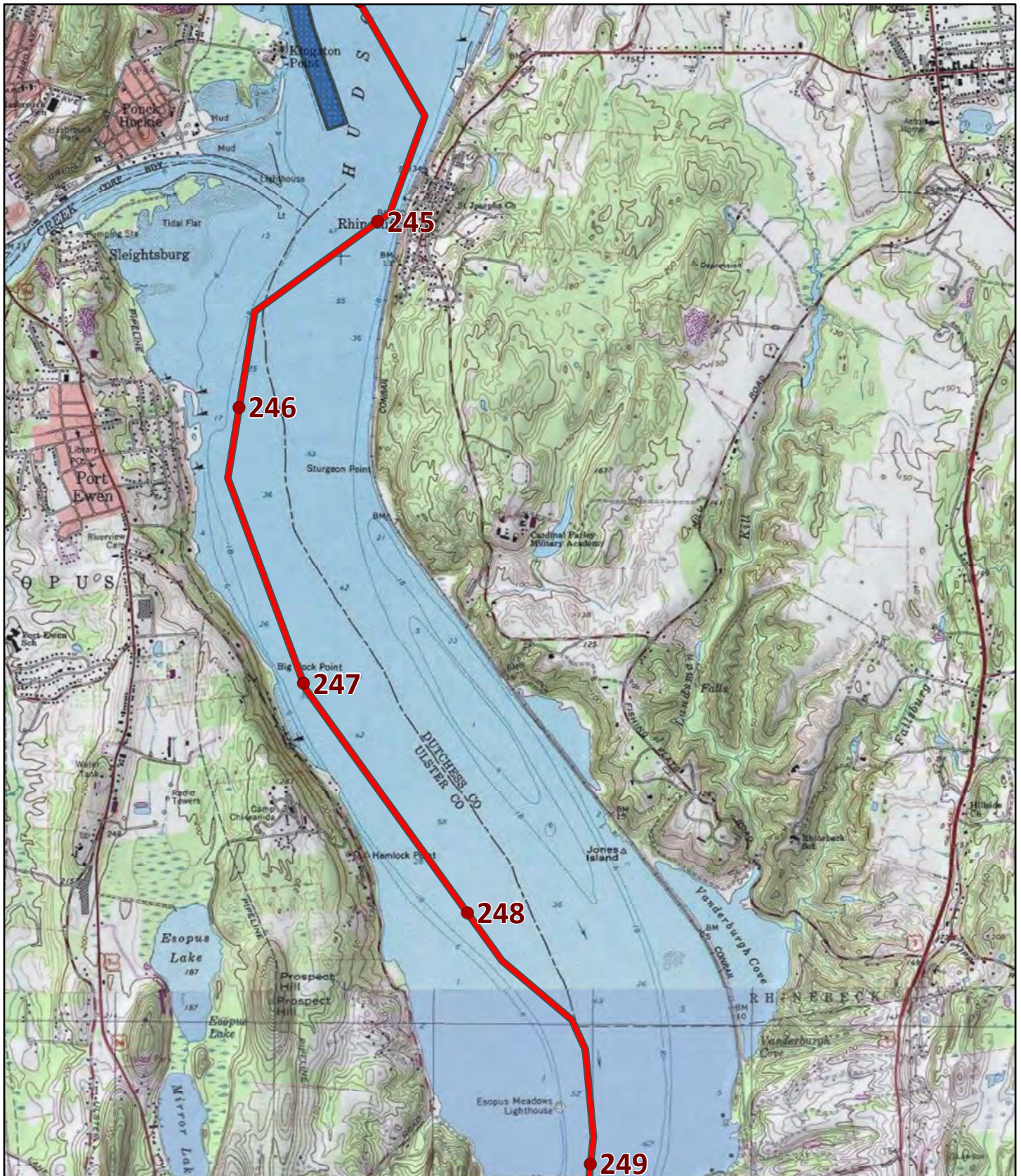


Projection: Transverse Mercator
 State Plane New York East FIPS 3101 Feet
 North American Datum of 1983

- Proposed CHPE Project Route Mileposts
- Proposed CHPE Project Route
- HDD Installation
- Pipe Bridge Installation
- Federal Navigation Channel
- Delineated Wetlands
- FEMA 100-Year Flood Zone

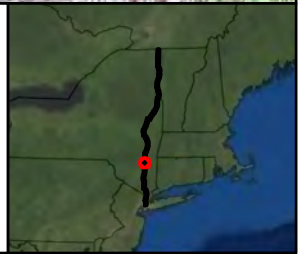


Source: Imagery - (c) 2010 Microsoft Corporation and its data suppliers.

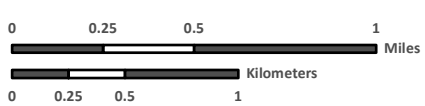
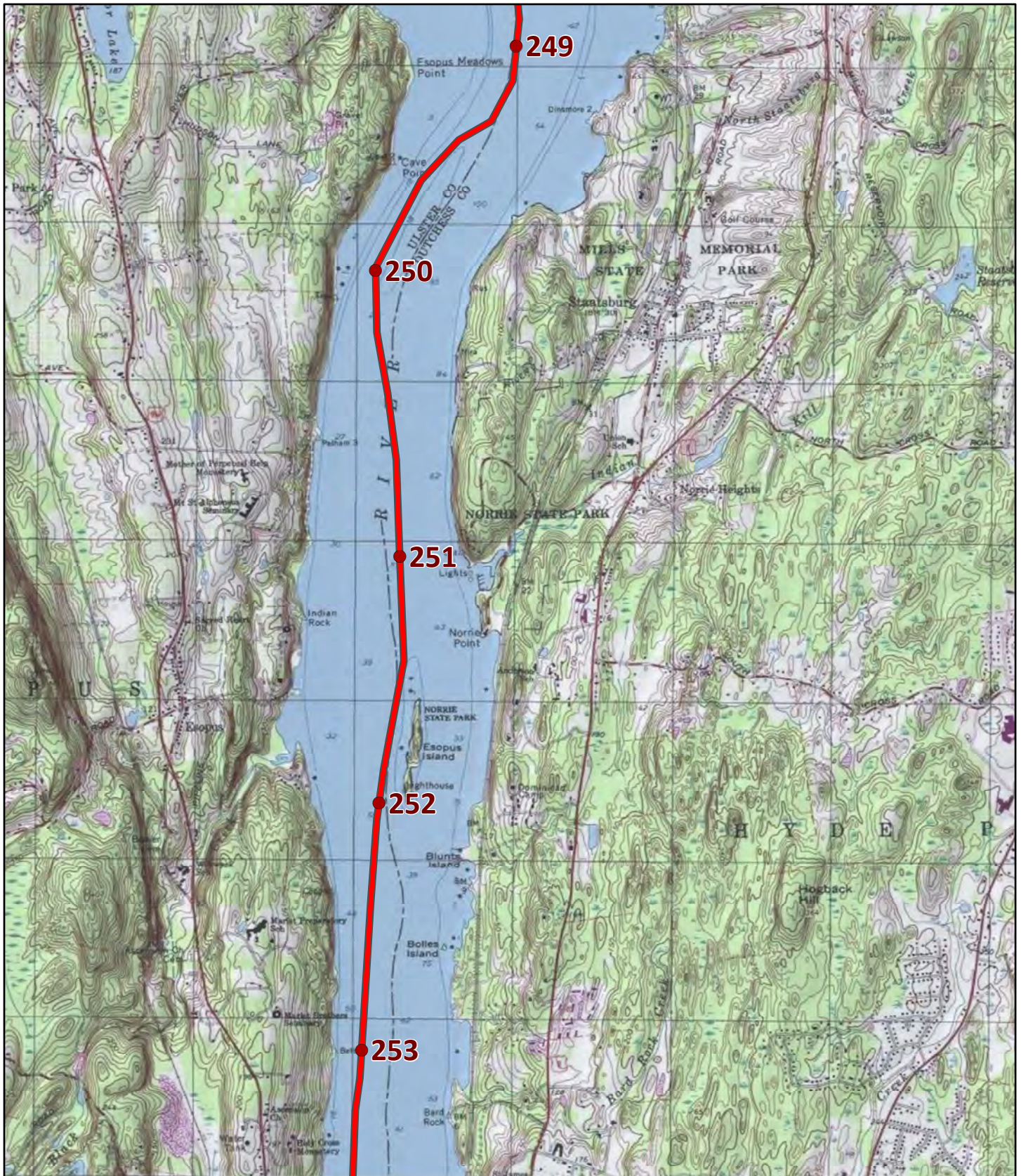


Projection: Transverse Mercator
 State Plane New York East FIPS 3101 Feet
 North American Datum of 1983

- Proposed CHPE Project Route Mileposts
- Proposed CHPE Project Route
- HDD Installation
- Pipe Bridge Installation
- Federal Navigation Channel
- FEMA 100-Year Flood Zone
- Delineated Wetlands



Source: Imagery -(c) 2010 Microsoft Corporation and its data suppliers.

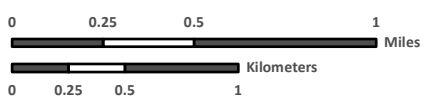
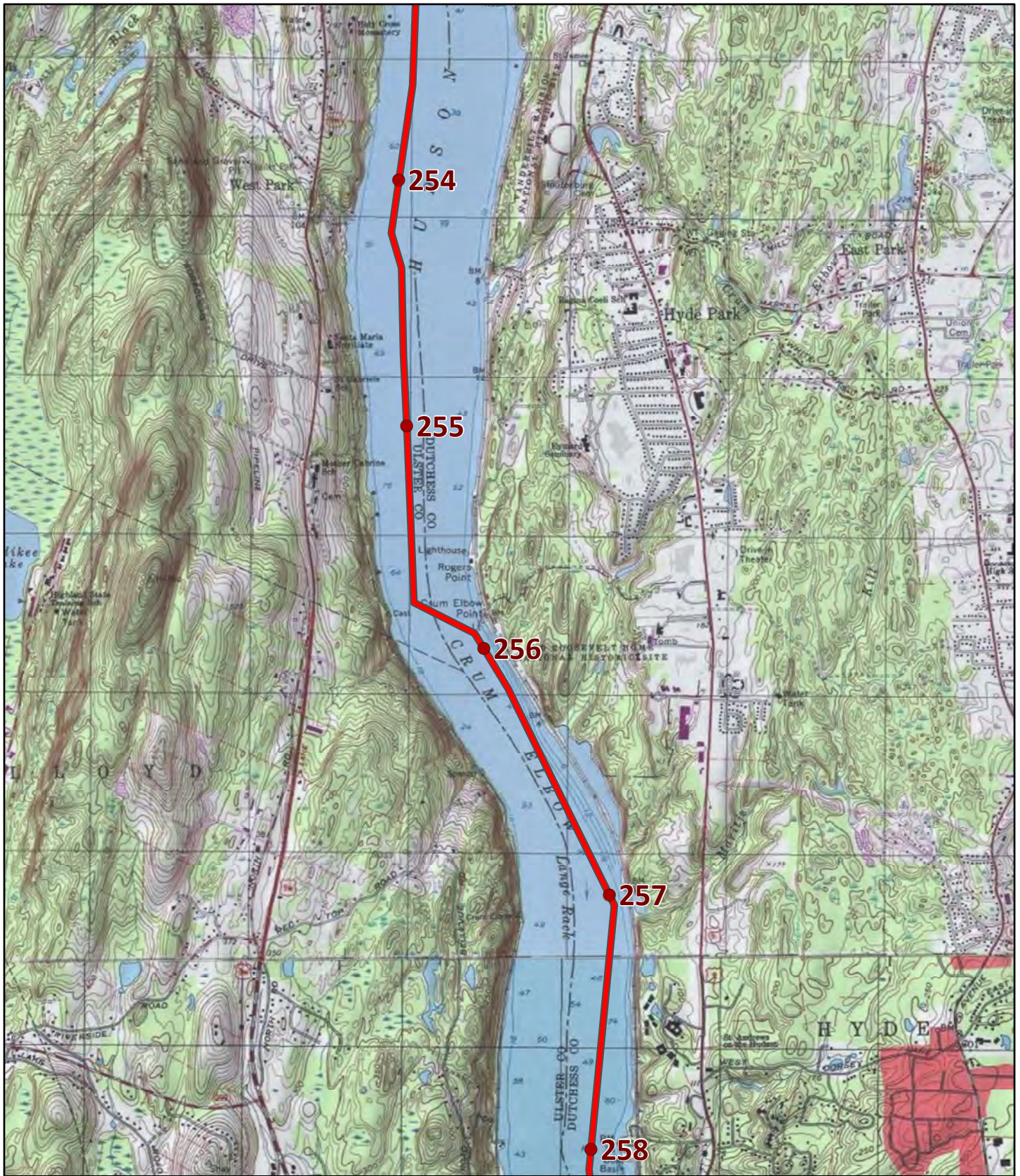


- Proposed CHPE Project Route Mileposts
- Proposed CHPE Project Route
- HDD Installation
- Pipe Bridge Installation
- Federal Navigation Channel
- FEMA 100-Year Flood Zone
- Delineated Wetlands

Projection: Transverse Mercator
 State Plane New York East FIPS 3101 Feet
 North American Datum of 1983

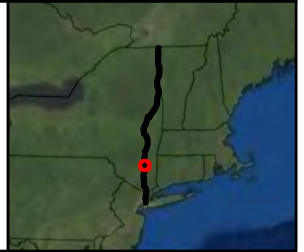


Source: Imagery -(c) 2010 Microsoft Corporation and its data suppliers.

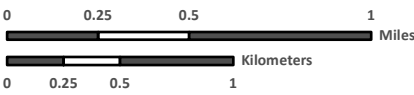
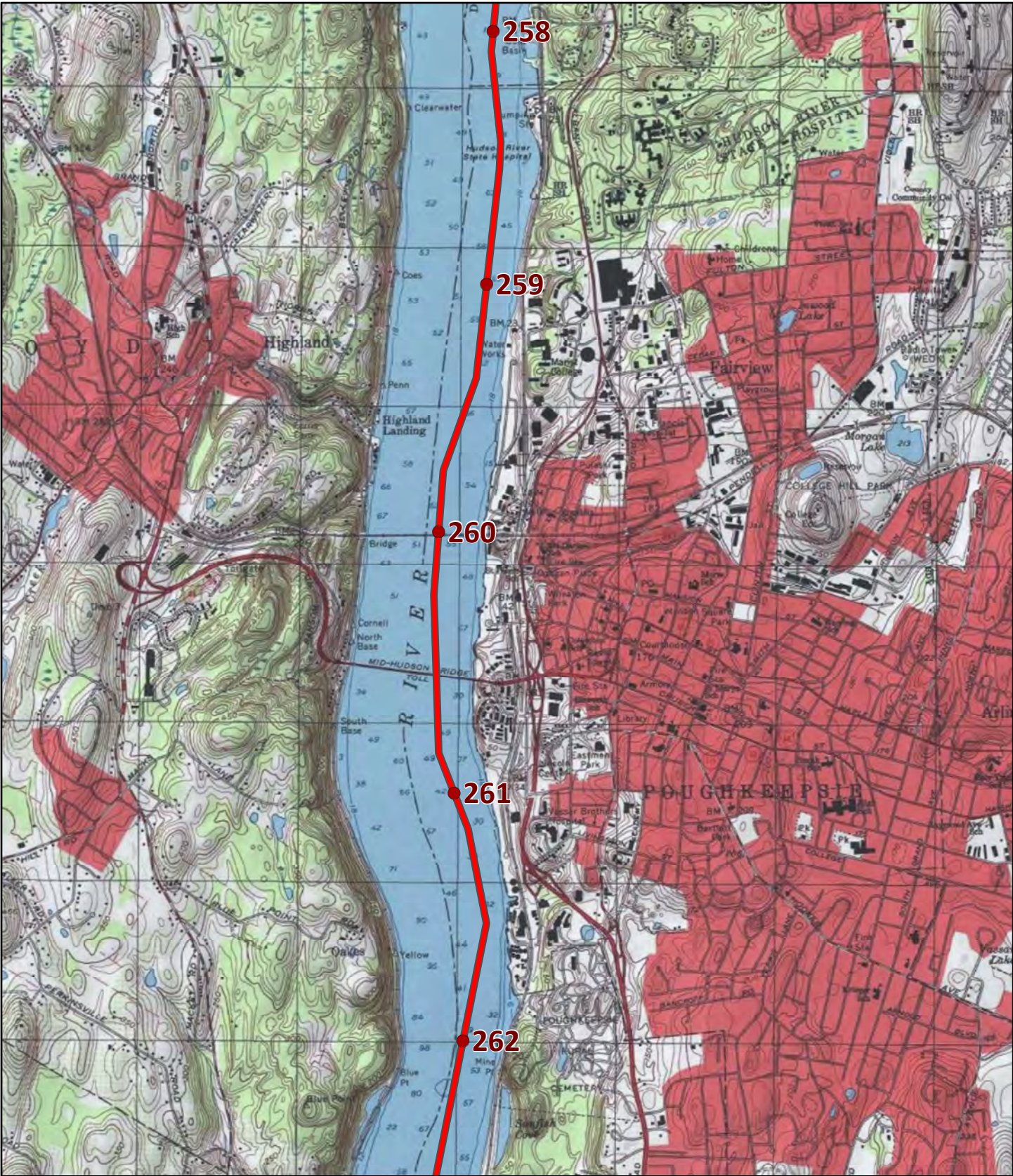


Projection: Transverse Mercator
 State Plane New York East FIPS 3101 Feet
 North American Datum of 1983

- Proposed CHPE Project Route Mileposts
- Proposed CHPE Project Route
- HDD Installation
- Pipe Bridge Installation
- Federal Navigation Channel
- FEMA 100-Year Flood Zone
- Delineated Wetlands

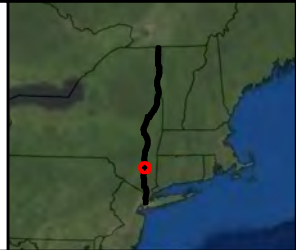


Source: Imagery - (c) 2010 Microsoft Corporation and its data suppliers.

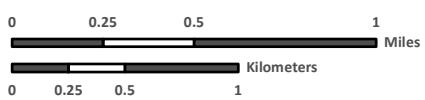
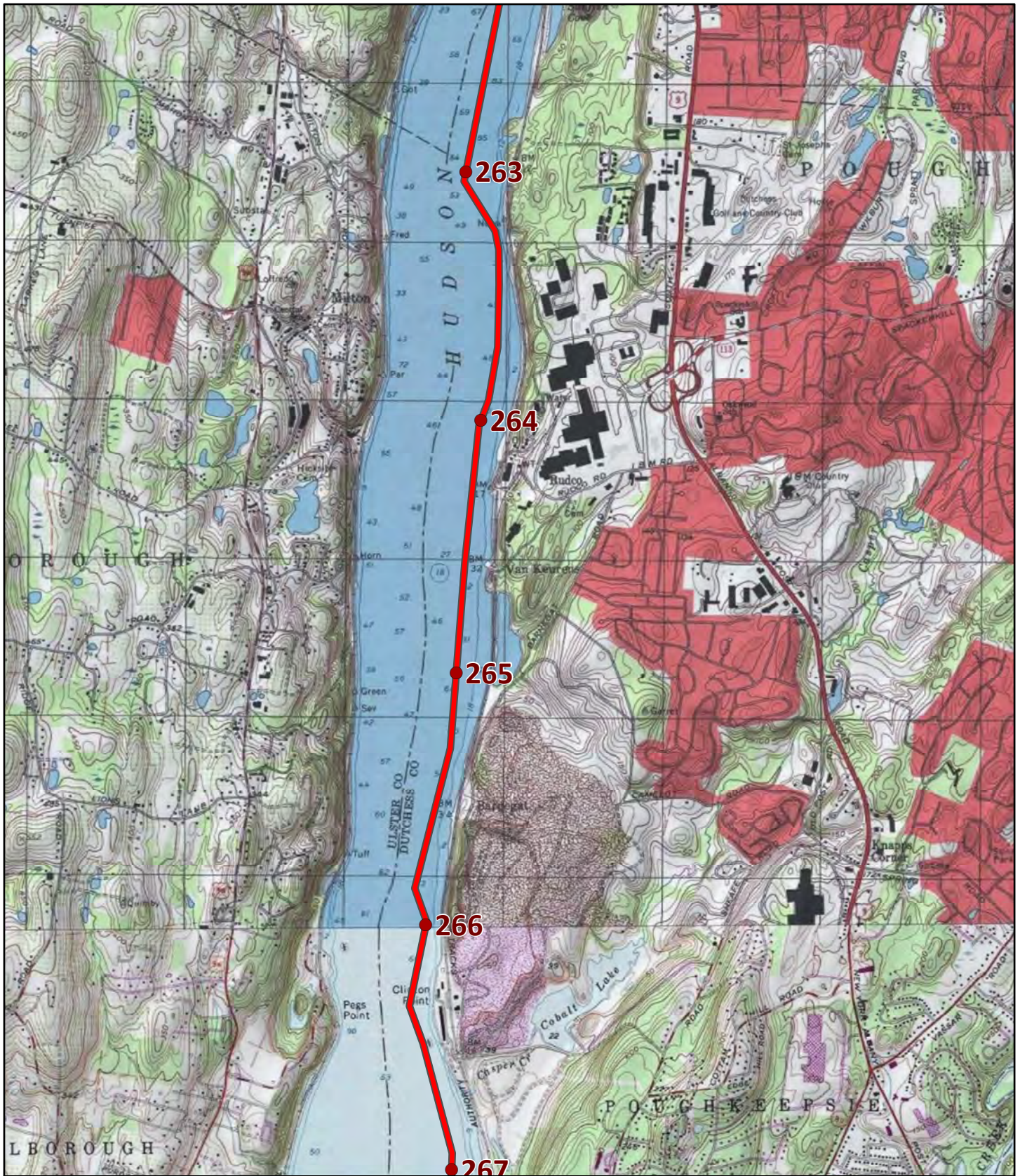


- Proposed CHPE Project Route Mileposts
- Delineated Wetlands
- Proposed CHPE Project Route
- HDD Installation
- Pipe Bridge Installation
- Federal Navigation Channel
- FEMA 100-Year Flood Zone

Projection: Transverse Mercator
 State Plane New York East FIPS 3101 Feet
 North American Datum of 1983

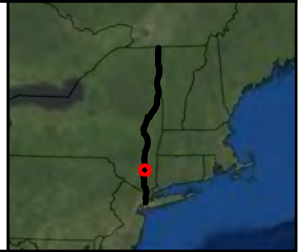


Source: Imagery -(c) 2010 Microsoft Corporation and its data suppliers.

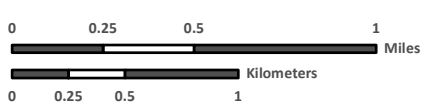
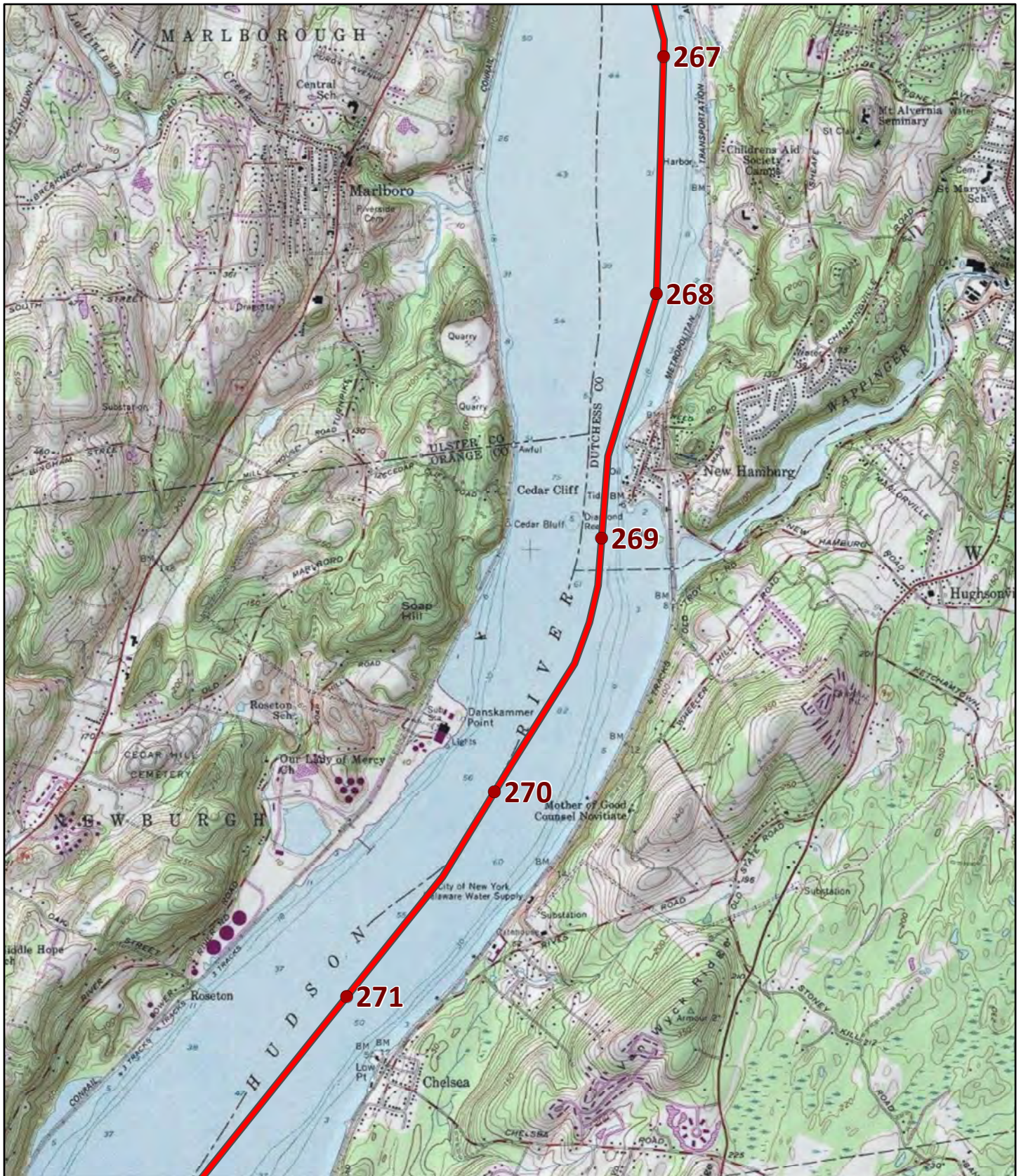


Projection: Transverse Mercator
 State Plane New York East FIPS 3101 Feet
 North American Datum of 1983

- Proposed CHPE Project Route Mileposts
- Proposed CHPE Project Route
- HDD Installation
- Pipe Bridge Installation
- Federal Navigation Channel
- FEMA 100-Year Flood Zone
- Delineated Wetlands



Source: Imagery - (c) 2010 Microsoft Corporation and its data suppliers.

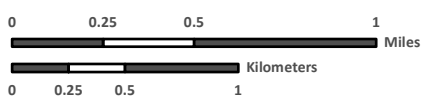
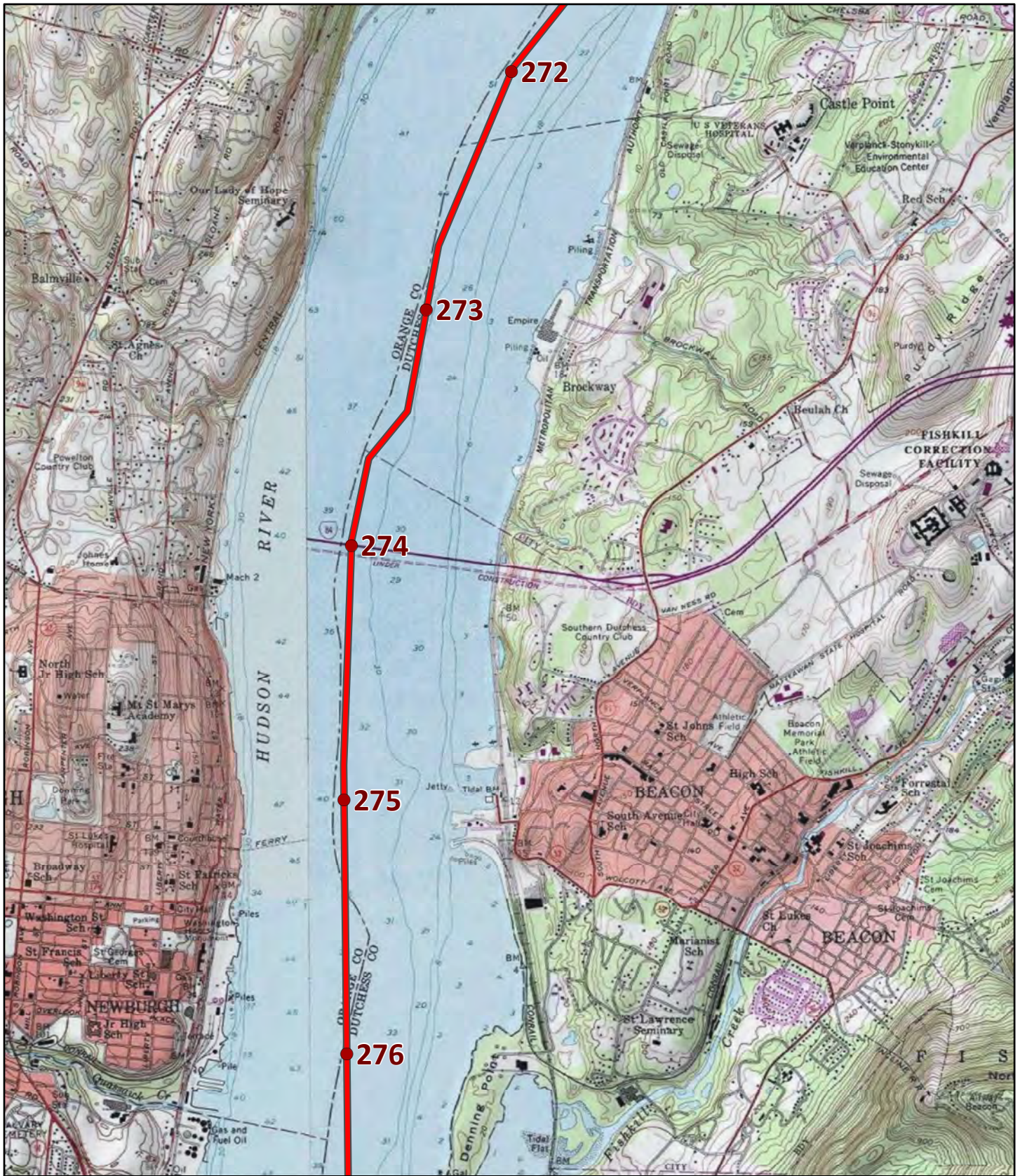


- Proposed CHPE Project Route Mileposts
- Proposed CHPE Project Route
- HDD Installation
- Pipe Bridge Installation
- Federal Navigation Channel
- FEMA 100-Year Flood Zone
- Delineated Wetlands

Projection: Transverse Mercator
 State Plane New York East FIPS 3101 Feet
 North American Datum of 1983

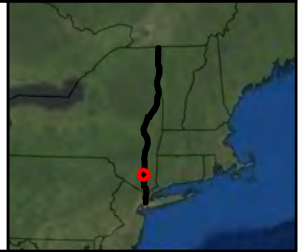


Source: Imagery (c) 2010 Microsoft Corporation and its data suppliers.

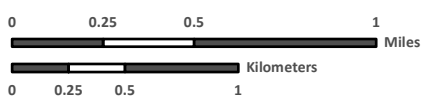
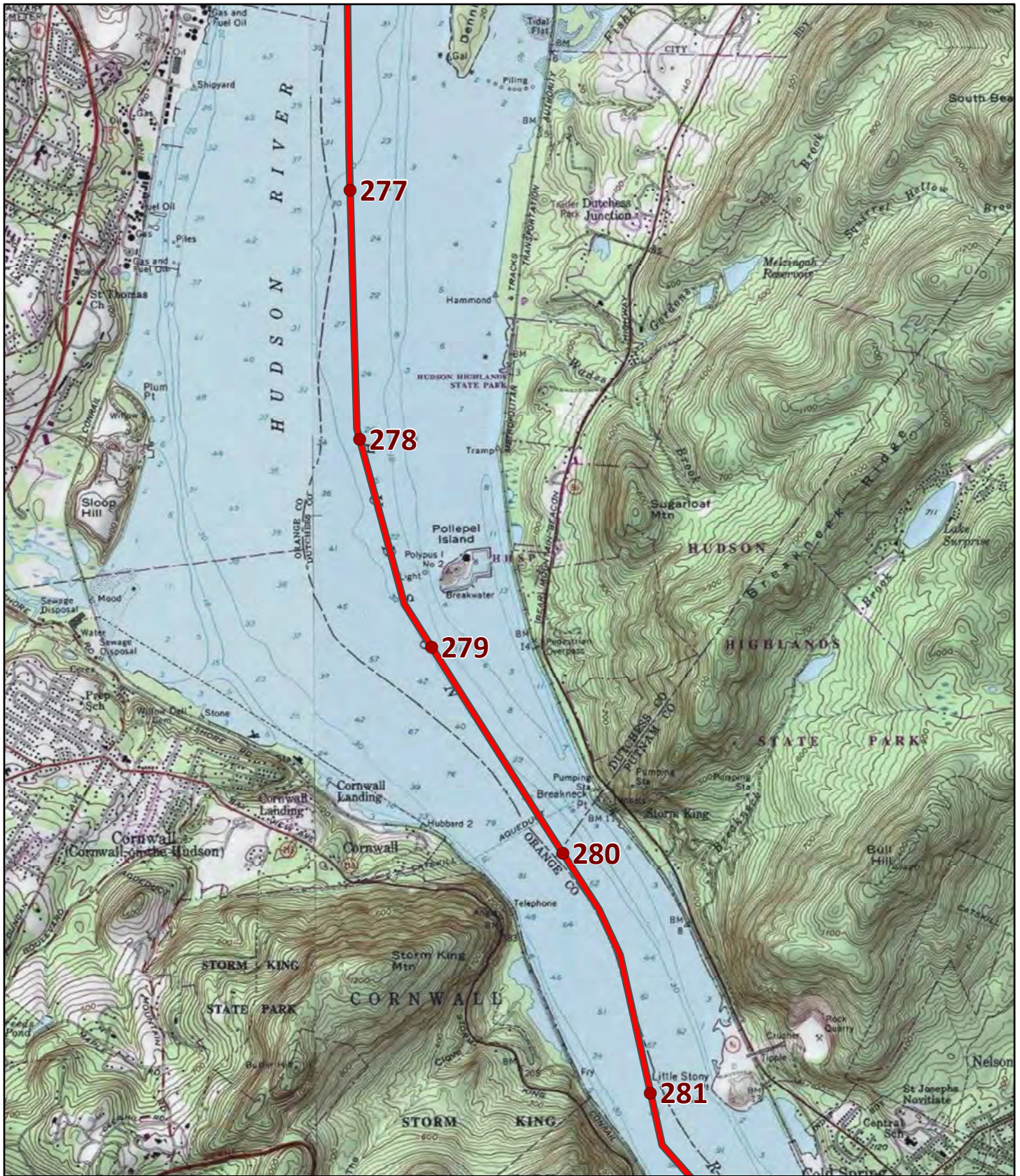


Projection: Transverse Mercator
 State Plane New York East FIPS 3101 Feet
 North American Datum of 1983

- Proposed CHPE Project Route Mileposts
- Proposed CHPE Project Route
- HDD Installation
- Pipe Bridge Installation
- ▨ Federal Navigation Channel
- ▨ FEMA 100-Year Flood Zone
- Delineated Wetlands



Source: Imagery - (c) 2010 Microsoft Corporation and its data suppliers.

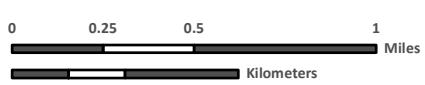
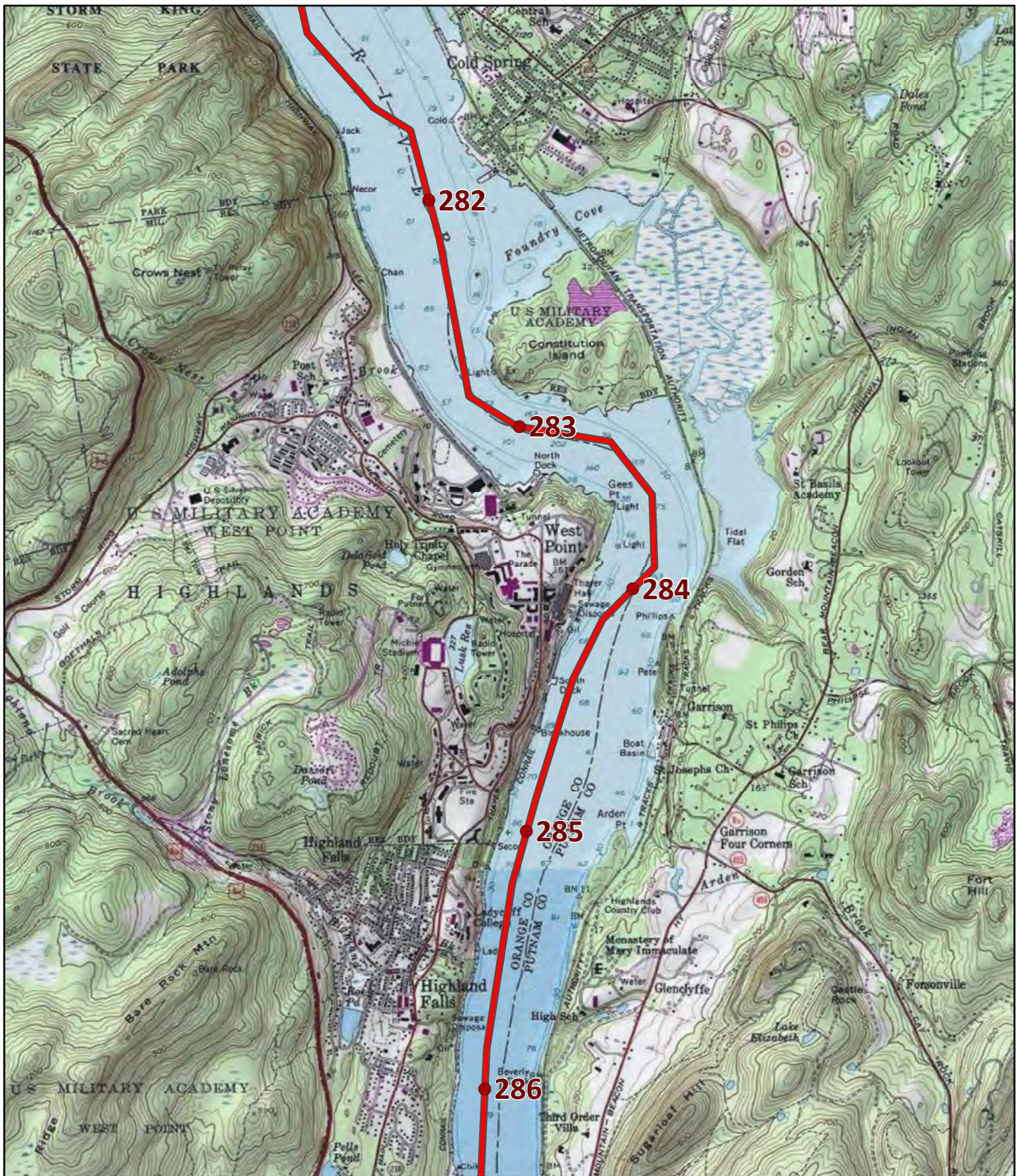


- Proposed CHPE Project Route Mileposts
- Proposed CHPE Project Route
- HDD Installation
- Pipe Bridge Installation
- Federal Navigation Channel
- FEMA 100-Year Flood Zone
- Delineated Wetlands

Projection: Transverse Mercator
 State Plane New York East FIPS 3101 Feet
 North American Datum of 1983



Source: Imagery (c) 2010 Microsoft Corporation and its data suppliers.

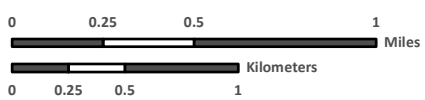
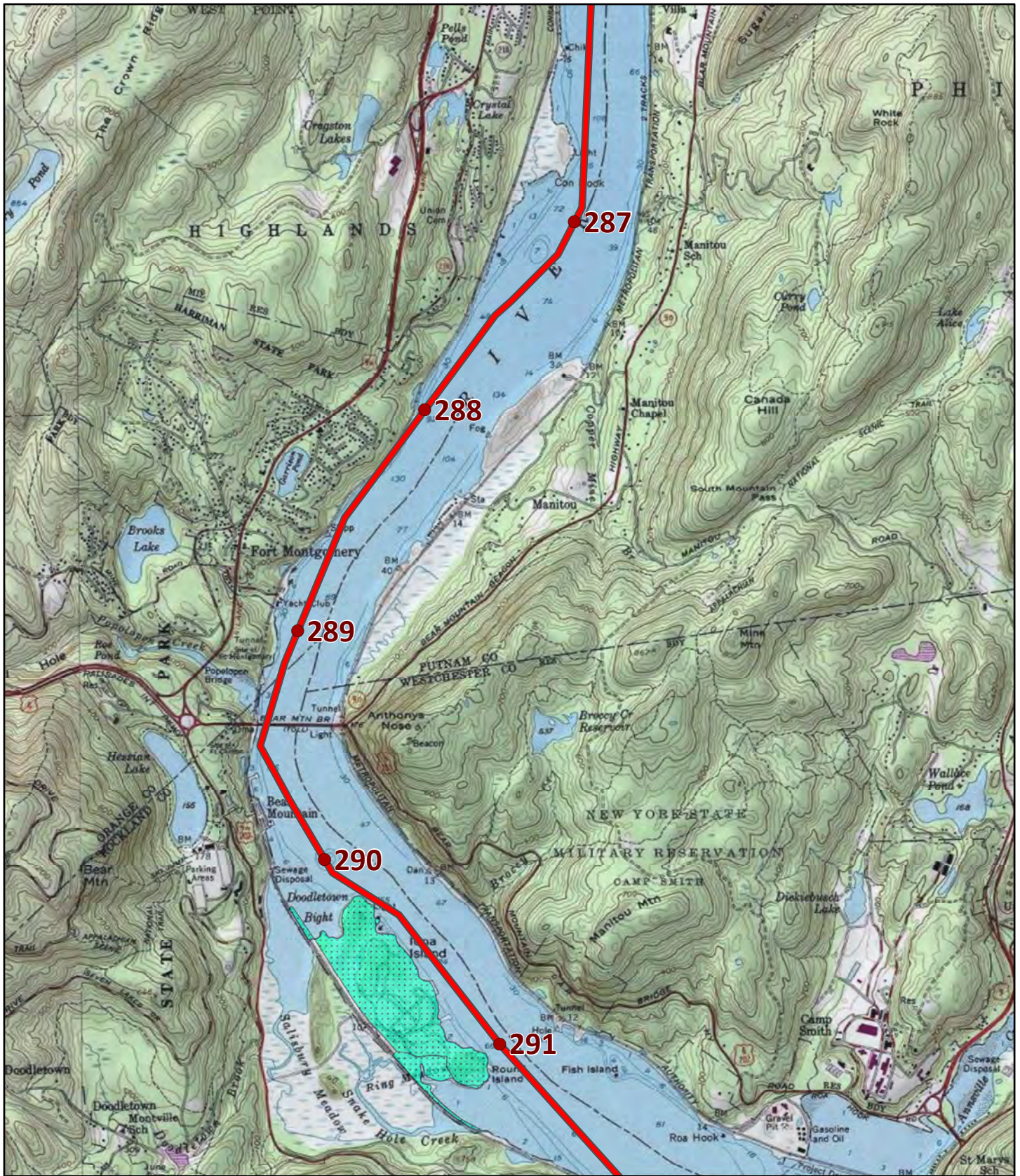


- Proposed CHPE Project Route Mileposts
- Delineated Wetlands
- Proposed CHPE Project Route
- HDD Installation
- Pipe Bridge Installation
- Federal Navigation Channel
- FEMA 100-Year Flood Zone

Projection: Transverse Mercator
 State Plane New York East FIPS 3101 Feet
 North American Datum of 1983



Source: Imagery -(c) 2010 Microsoft Corporation and its data suppliers.

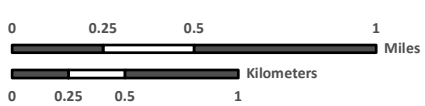
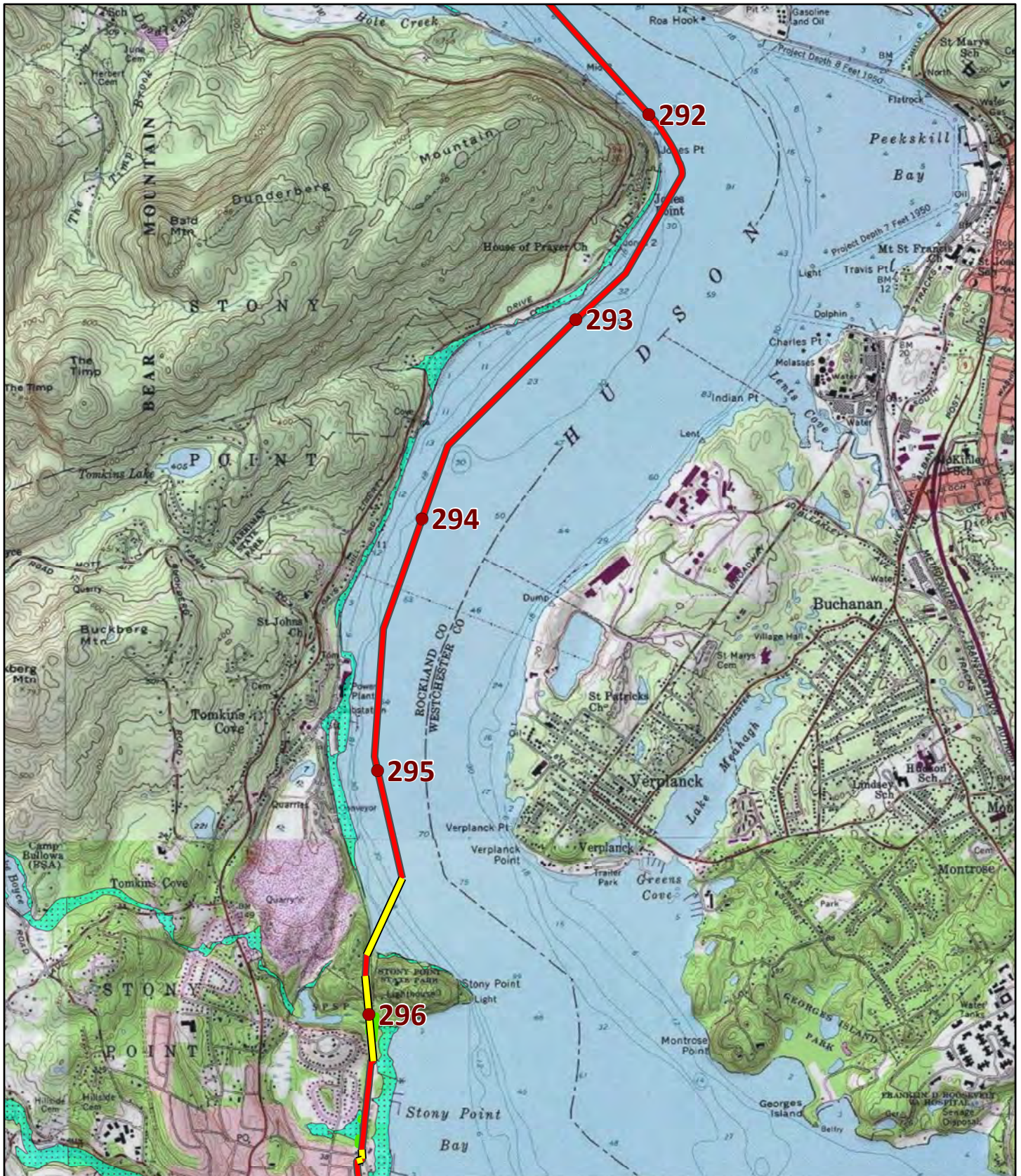


- Proposed CHPE Project Route Mileposts
- Proposed CHPE Project Route
- HDD Installation
- Pipe Bridge Installation
- Federal Navigation Channel
- FEMA 100-Year Flood Zone
- Delineated Wetlands

Projection: Transverse Mercator
 State Plane New York East FIPS 3101 Feet
 North American Datum of 1983



Source: Imagery - (c) 2010 Microsoft Corporation and its data suppliers.

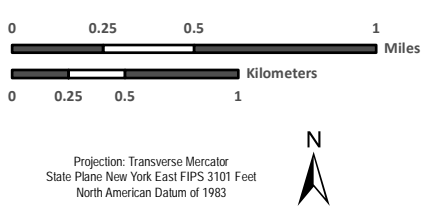


- Proposed CHPE Project Route Mileposts
- Proposed CHPE Project Route
- HDD Installation
- Pipe Bridge Installation
- Federal Navigation Channel
- FEMA 100-Year Flood Zone
- Delineated Wetlands

Projection: Transverse Mercator
 State Plane New York East FIPS 3101 Feet
 North American Datum of 1983



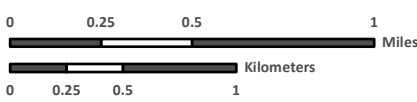
Source: Imagery - (c) 2010 Microsoft Corporation and its data suppliers.



- Proposed CHPE Project Route Mileposts
- Proposed CHPE Project Route
- HDD Installation
- Pipe Bridge Installation
- Federal Navigation Channel
- FEMA 100-Year Flood Zone
- Delineated Wetlands

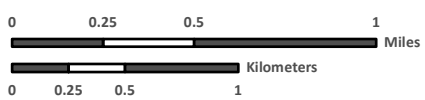
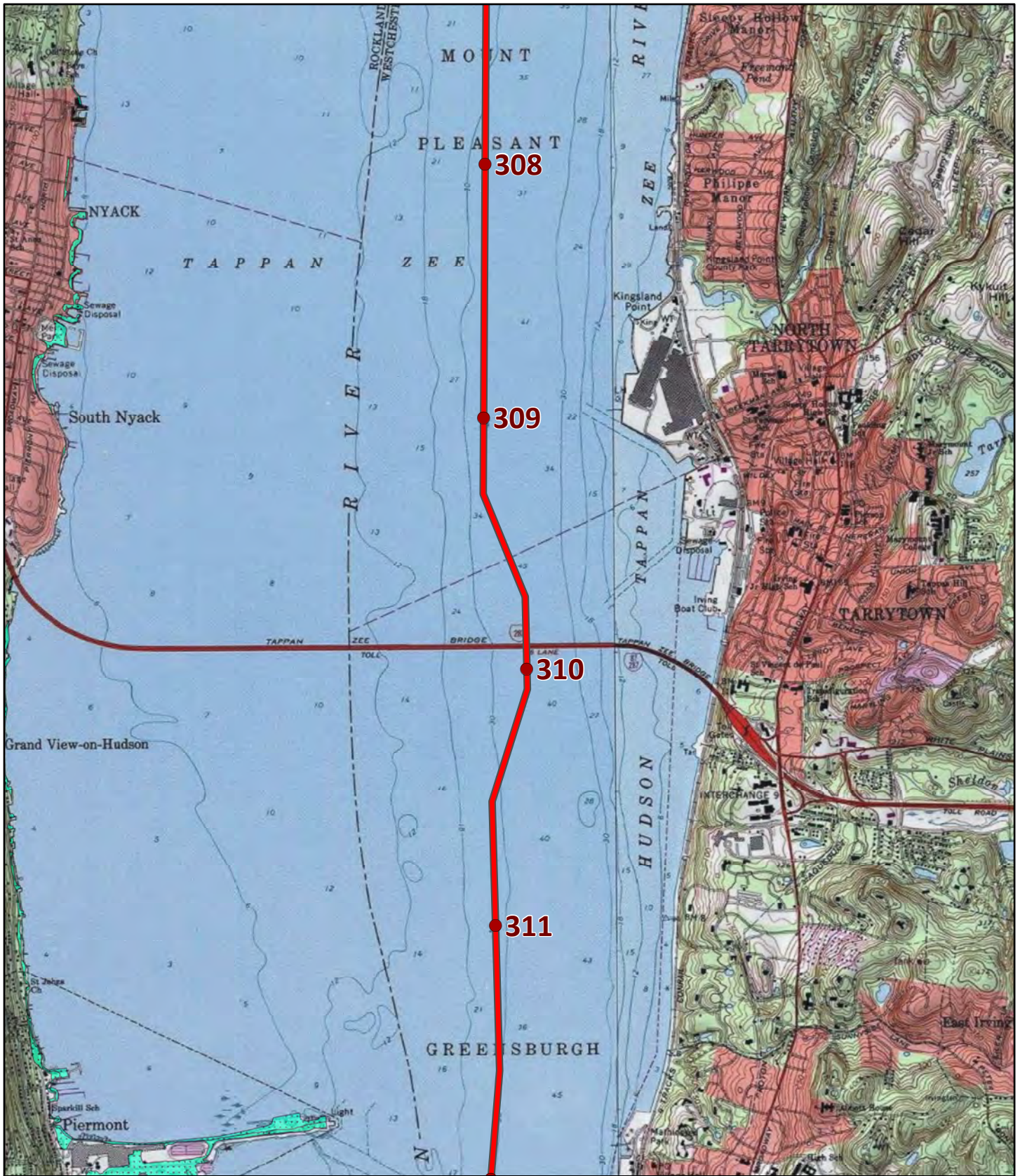
Projection: Transverse Mercator
 State Plane New York East FIPS 3101 Feet
 North American Datum of 1983

Source: Imagery - (c) 2010 Microsoft Corporation and its data suppliers.



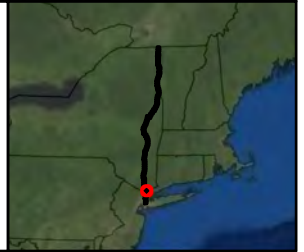
Projection: Transverse Mercator
 State Plane New York East FIPS 3101 Feet
 North American Datum of 1983

- Proposed CHPE Project Route Mileposts
- Proposed CHPE Project Route
- HDD Installation
- Pipe Bridge Installation
- Federal Navigation Channel
- FEMA 100-Year Flood Zone
- Delineated Wetlands

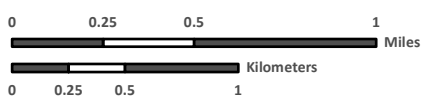
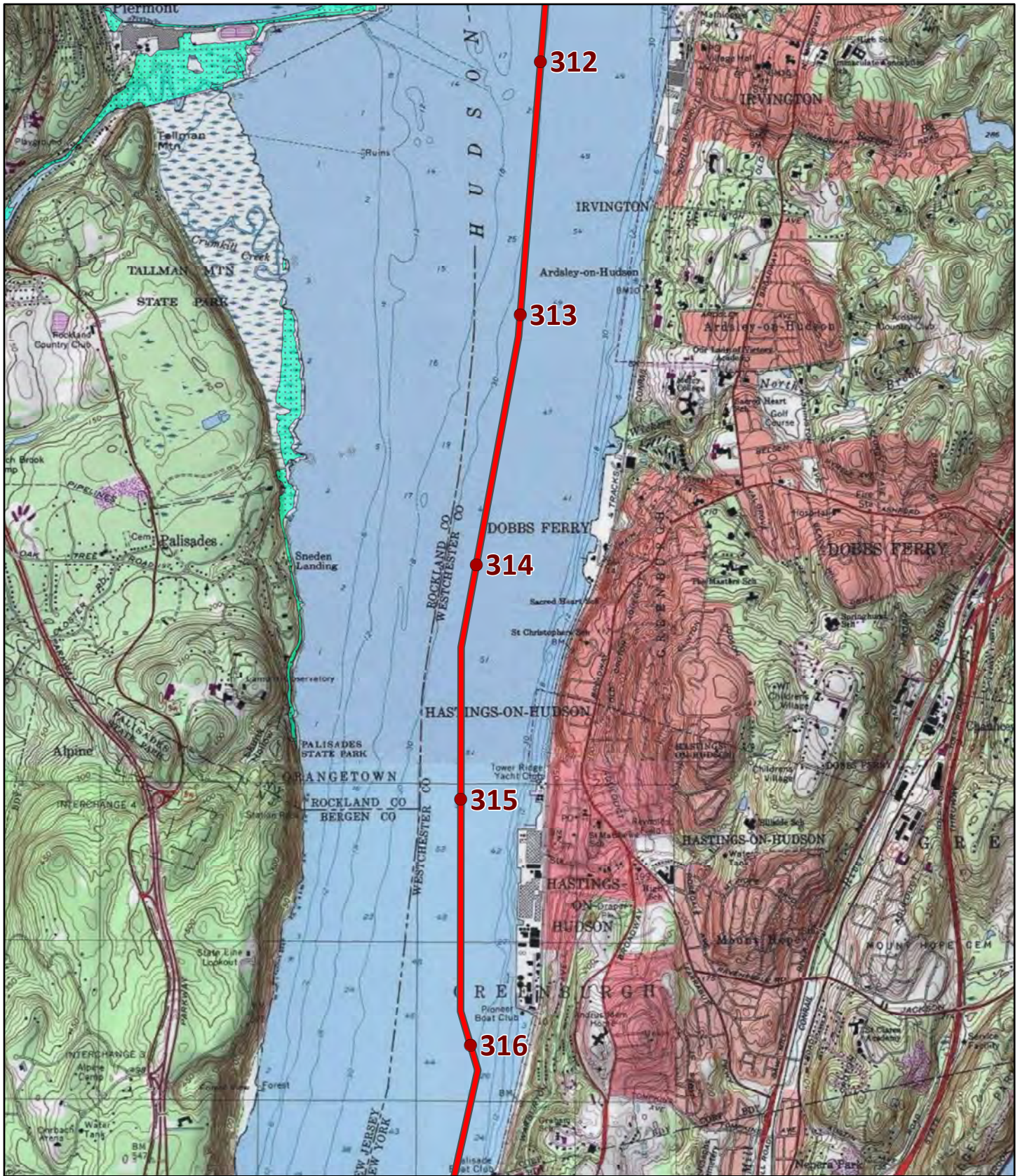


Projection: Transverse Mercator
 State Plane New York East FIPS 3101 Feet
 North American Datum of 1983

- Proposed CHPE Project Route Mileposts
- Proposed CHPE Project Route
- HDD Installation
- Pipe Bridge Installation
- Federal Navigation Channel
- FEMA 100-Year Flood Zone
- Delineated Wetlands



Source: Imagery - (c) 2010 Microsoft Corporation and its data suppliers.

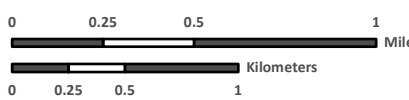
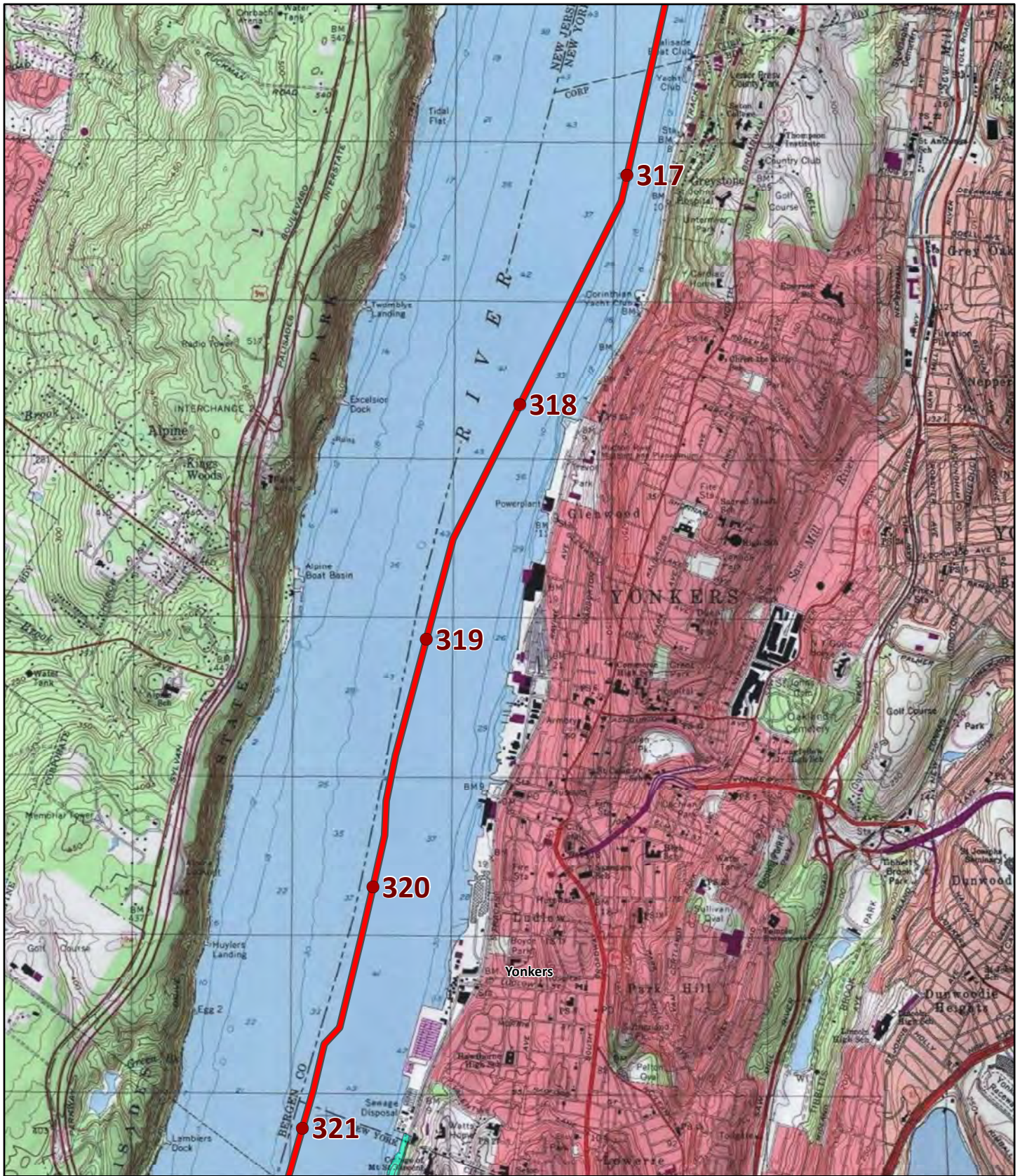


- Proposed CHPE Project Route Mileposts
- Proposed CHPE Project Route
- HDD Installation
- Pipe Bridge Installation
- Federal Navigation Channel
- FEMA 100-Year Flood Zone
- Delineated Wetlands

Projection: Transverse Mercator
 State Plane New York East FIPS 3101 Feet
 North American Datum of 1983



Source: Imagery (c) 2010 Microsoft Corporation and its data suppliers.

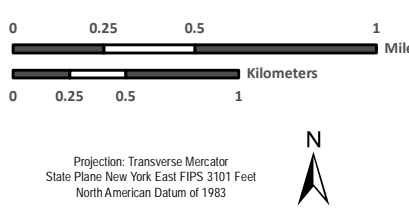
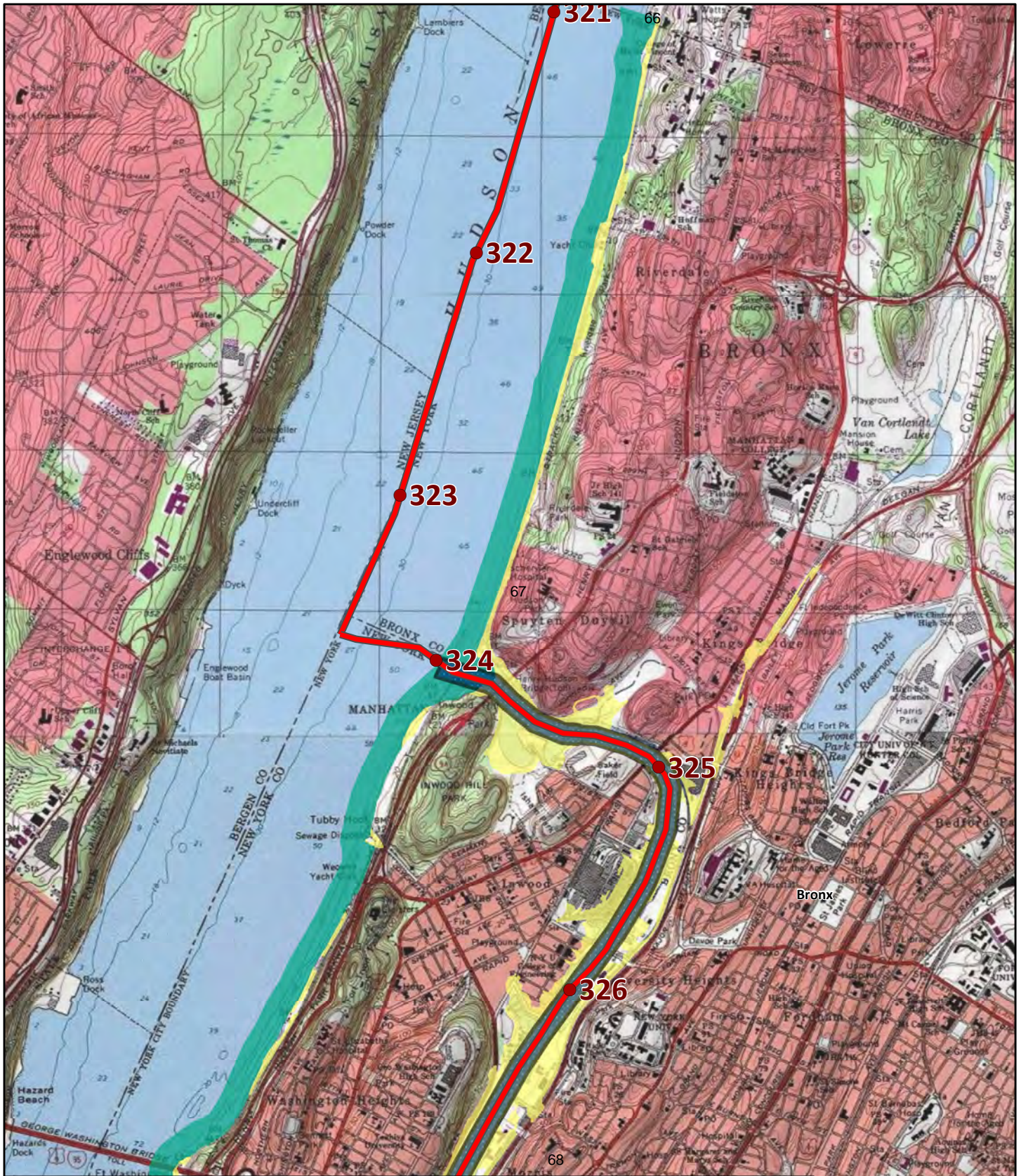


- Proposed CHPE Project Route Mileposts
- Delineated Wetlands
- Proposed CHPE Project Route
- HDD Installation
- Pipe Bridge Installation
- Federal Navigation Channel
- FEMA 100-Year Flood Zone

Projection: Transverse Mercator
 State Plane New York East FIPS 3101 Feet
 North American Datum of 1983

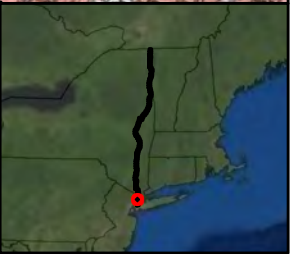


Source: Imagery -(c) 2010 Microsoft Corporation and its data suppliers.

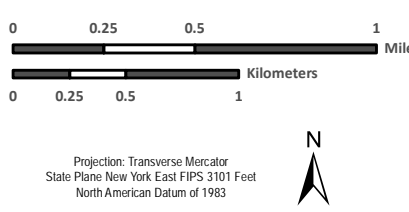
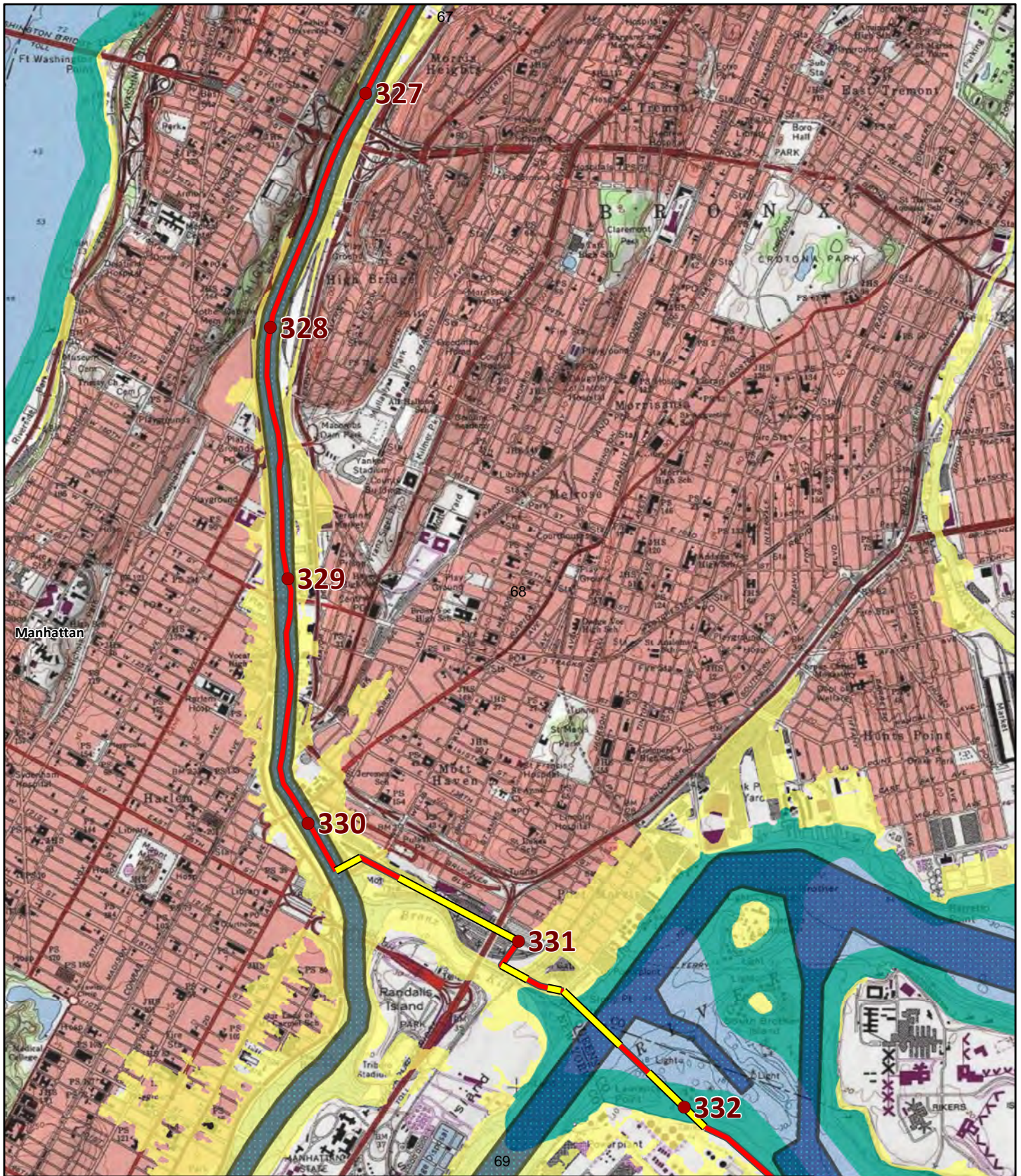


Projection: Transverse Mercator
 State Plane New York East FIPS 3101 Feet
 North American Datum of 1983

- Proposed CHPE Project Route Mileposts
- Proposed CHPE Project Route
- FEMA Preliminary Draft Work Map Data
 - Zone AE - High flood risk subject to inundation by the 1% annual-chance flood event. Base Flood Elevations (BFEs) have been determined.
 - Zone VE - High flood risk subject to inundation by the 1% annual-chance flood event and storm-induced velocity wave action (a 3-foot or higher breaking wave).
- Delineated Wetlands
- Pipe Bridge Installation
- Federal Navigation Channel
- HDD Installation

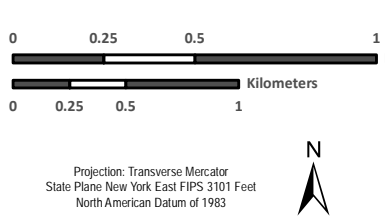
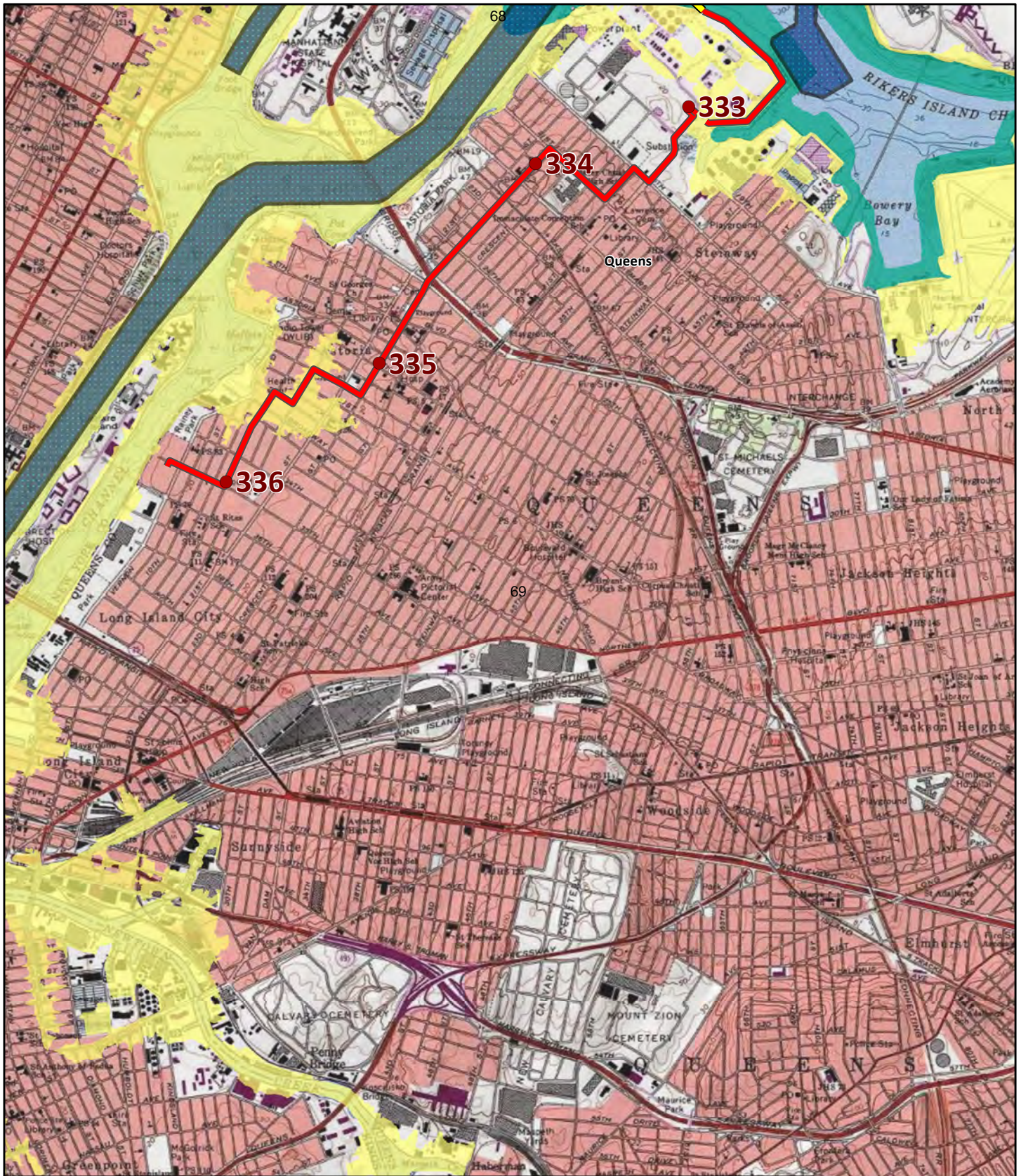


Source: Imagery - (c) 2010 Microsoft Corporation and its data suppliers.

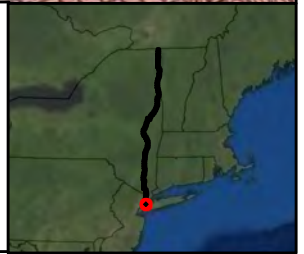


- Proposed CHPE Project Route Mileposts
 - Proposed CHPE Project Route
 - HDD Installation
 - Pipe Bridge Installation
 - Delineated Wetlands
 - Federal Navigation Channel
- FEMA Preliminary Draft Work Map Data**
- Zone AE - High flood risk subject to inundation by the 1% annual-chance flood event. Base Flood Elevations (BFEs) have been determined.
 - Zone VE - High flood risk subject to inundation by the 1% annual-chance flood event and storm-induced velocity wave action (a 3-foot or higher breaking wave).

Source: Imagery - (c) 2010 Microsoft Corporation and its data suppliers.



- Proposed CHPE Project Route Mileposts
 - Proposed CHPE Project Route
 - HDD Installation
 - Pipe Bridge Installation
 - Delineated Wetlands
 - Federal Navigation Channel
- FEMA Preliminary Draft Work Map Data**
- Zone AE - High flood risk subject to inundation by the 1% annual-chance flood event. Base Flood Elevations (BFEs) have been determined.
 - Zone VE - High flood risk subject to inundation by the 1% annual-chance flood event and storm-induced velocity wave action (a 3-foot or higher breaking wave).



Source: Imagery -(c) 2010 Microsoft Corporation and its data suppliers.